

VTA's BART Silicon Valley Phase II Extension Project

Santa Clara
Community Working Group Meeting

February 8th, 2024



Agenda

- Welcome & Introduction
- Phase II Update
- Station Configuration Update
- Santa Clara Design Review Committee Update
- Business Resource Program 2024 Plan
- Early Construction Activities
- 2024 CWG Workplan Review
- CWG Member Report Out
- Next Steps

Santa Clara CWG Members



- Alden Smith, Holland Partner Group
- **Ana Vargas-Smith**, *Reclaiming Our Downtown*
- Grace Davis, *SCU Service & Social Justice (SCCAP)*
- David Cajigas, *Santa Clara University*
- Jack Morash, *South Bay Historic Railroad Society*
- John Urban, *Newhall Neighborhood Association*
- Jonathon Evans, *Old Quad Residents Association*
- Ron Miller, *Bellarmino College Preparatory*
- Ryan Morfin, *San José Earthquakes*
- Todd Trekell, *Hunter Partners*
- *Vacant*, *Silicon Valley Central Chamber of Commerce*

Upcoming Meetings



- Upcoming CWG Dates
 - Santa Clara CWG Meeting: May 16, 2024
- VTA Board of Directors vta.org/about/board-and-committees

Committee Meeting (BSV Steering Committee, others)	Board Meeting	Item
February 8	March 7	Small Business Resource Program and Funding
March 14	April 4	Additional Funding for Contract Package 2 (CP2) West Portal/TBM Launch Facility Construction (Early Work Package 3C)
March 14	-	Funding Plan for FTA New Starts Engineering Application
March 14	April 4	Construction Management Services Contract Award
March 21 (A&F)	April 4	BART Railcar Procurement for BART Silicon Valley Phase II (BSVII)
-	April 19 (Workshop) or May 2	Funding Plan for FTA Full Funding Grant Agreement (FFGA) Application
March 14 or April 11	April 4 or May 2	Addendum to 2018 Final Subsequent Environmental Impact Report (SEIR) for BSVII Design Refinements
April 11 or May 9	May 2 or June 6	Additional Funding for CP2 Early Work Packages*
November 14	December 5	CP2 Tunnel and Trackwork Stage 2 Award (Heavy Construction)

- Kristen will email alerts for other meetings



Phase II Update

Bernice Alaniz, VTA

FTA Risk Assessment Update



- Three-day risk assessment workshop held week of January 16th
- Attendees from FTA Headquarters, Region 9, and Project Management Oversight Consultant (PMOC)
- Included tour of alignment and review of risks associated with cost, schedule, organization, and technical aspects of project
- Results expected mid to late February



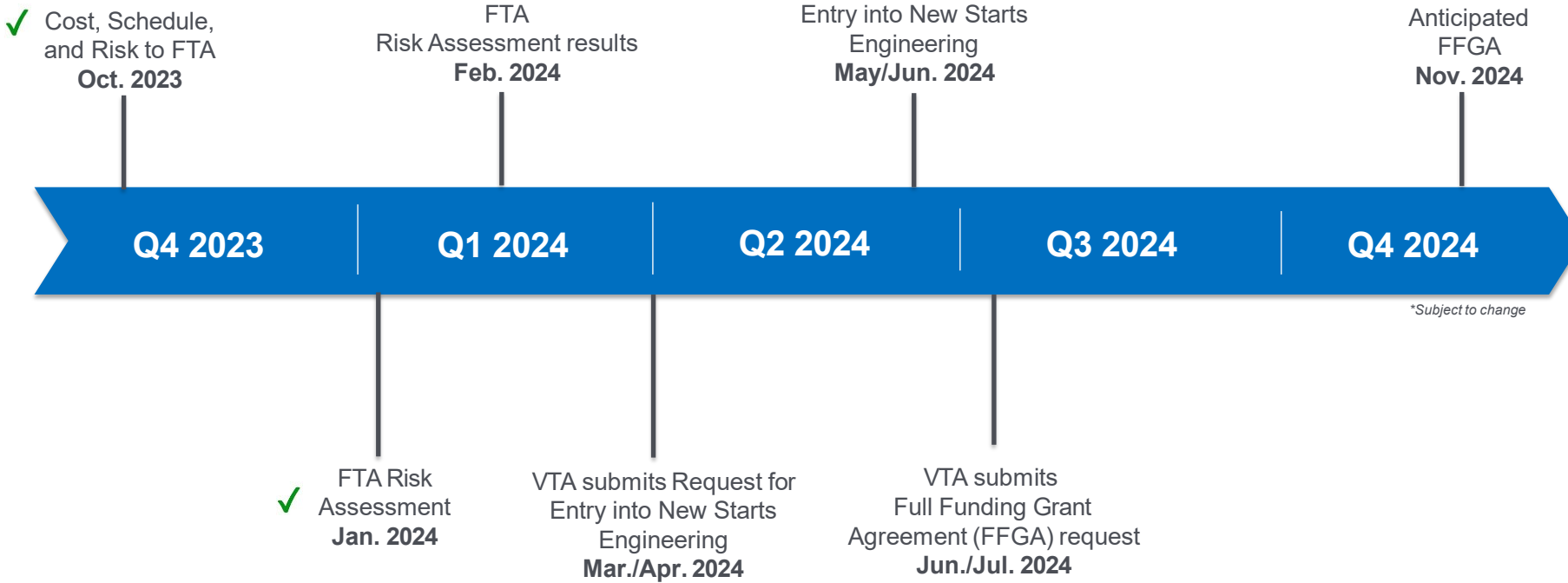
VTA Identified Key Risks & Mitigations



- West Portal TBM launch facility readiness/cost
- Unanticipated damage to historic buildings, structures, and utilities
- Construction labor shortages and associated premiums
- Testing and commissioning delays
- Program staffing, capacity and continuity to support project timeline

A screenshot of a risk register spreadsheet, tilted at an angle. The spreadsheet has multiple columns and rows, with some cells highlighted in blue and yellow. The columns appear to include risk ID, description, category, and status. The rows contain detailed text for each risk item, including mitigation strategies and assigned personnel.

Next Steps with Federal Transit Administration (FTA)



**Subject to change*

2024 Advocacy Efforts



- Launched advocacy program to reinforce project support on the Federal, State and Local levels leading to the project's Full Funding Grant Agreement before the end of the year
- Relaying seven key messages to support the importance of completing the BART Silicon Valley Extension Project
- Breakfast outreach meetings will be planned in March to connect with and update key project stakeholders/CWG members

BART Phase II In the News



- Former Mayor Sam Liccardo said a portion of the \$12.2 billion project — **Diridon Station to Santa Clara Station** — **should be struck from the proposal and potentially completed at another time**, pointing out that Caltrain already offers services between them.
- VTA’s Chief Megaproject Officer Tom Maguire said the agency “has a **defined path forward that is voter-approved and supported by the Board of Directors and the public**. At present, we are at work on the remaining six-mile extension that will run from Berryessa Station and include stations at 28th Street/Little Portugal, downtown San Jose, Diridon and Santa Clara.”
- “**There is no alternative design** at this point,” said Mahan. “**To do that would risk delay and potentially more expense and put the full funding agreement from the federal government at risk**. So I would say at this point, in practice, given where we are, it’s a long shot, but everything should be on the table.”



Image Credits: Anda Chu/Bay Area News Group



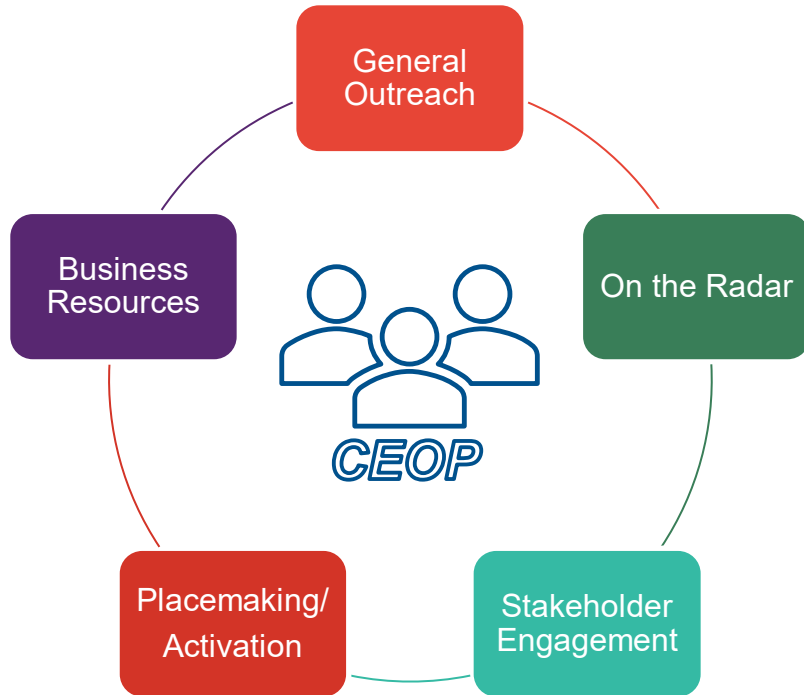
Construction Education and Outreach Plan (CEOP): communication during construction between VTA, cities of San José and Santa Clara, and the public



Construction Transportation Management Plan (CTMP): coordinate circulation and access needs within and around the construction areas for all transportation modes



Emergency Services Coordination Plan (ESCP): coordinate with local emergency services to minimize impact to emergency service routes and response times due to construction activities



Five Elements

- **General Outreach** – Raise visibility along the alignment and beyond about major milestones & activities in planning, design and construction
- **Stakeholder Engagement** – Build relationships with those most touched by the project
- **Business Resources** – Support during construction
- **Placemaking/Activation** – Enhance access and awareness during construction
- **On the Radar** – Coordinate with other projects in area on messaging and communications



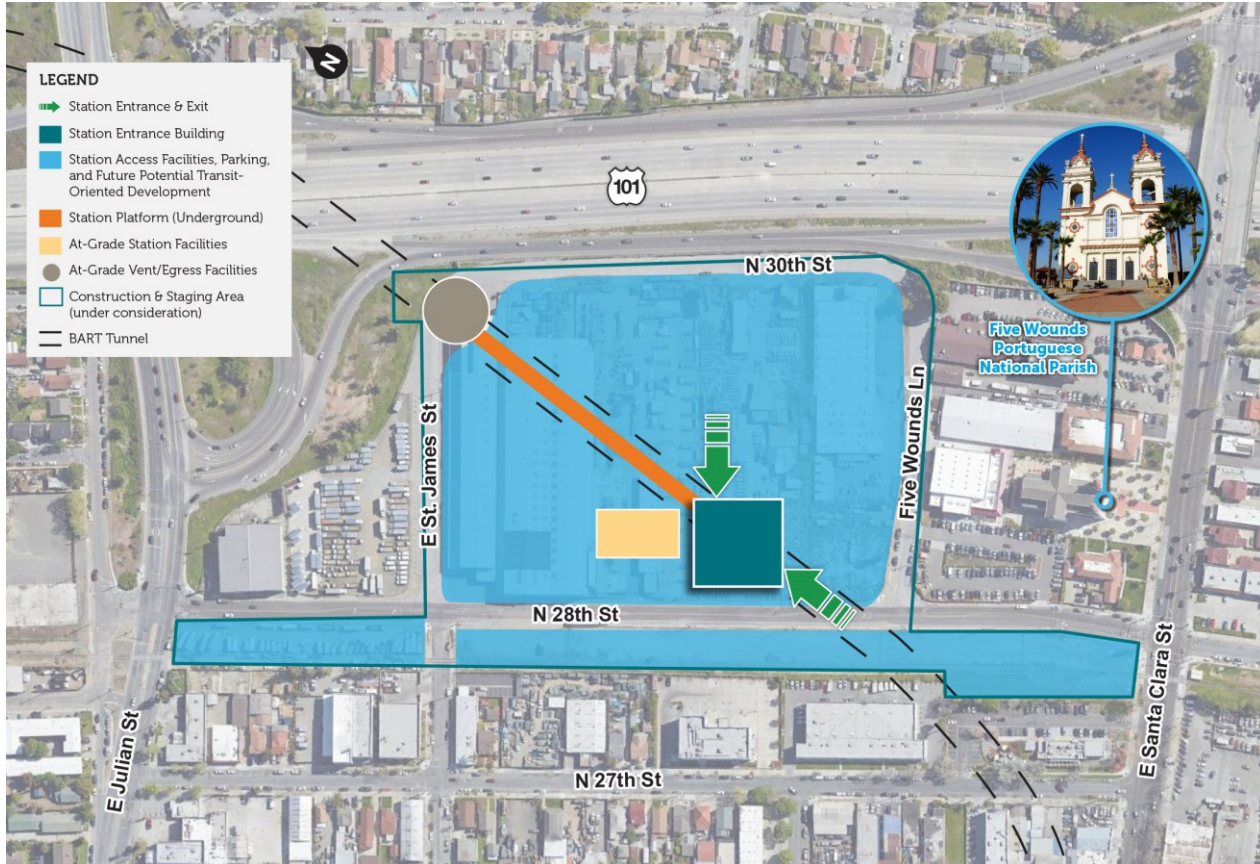
Station Configuration Update

Nile Ledbetter, VTA

28th Street/Little Portugal BART Station

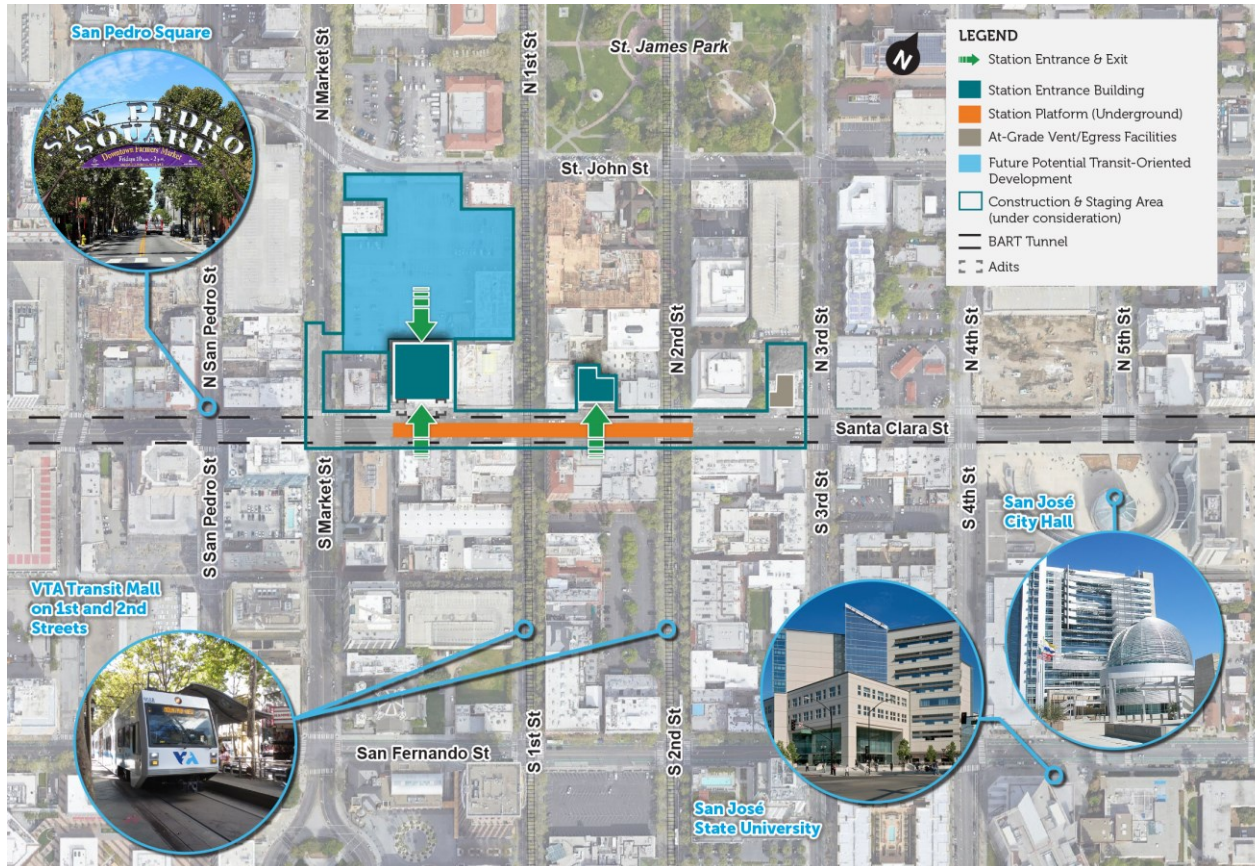


28th Street/Little Portugal BART Station

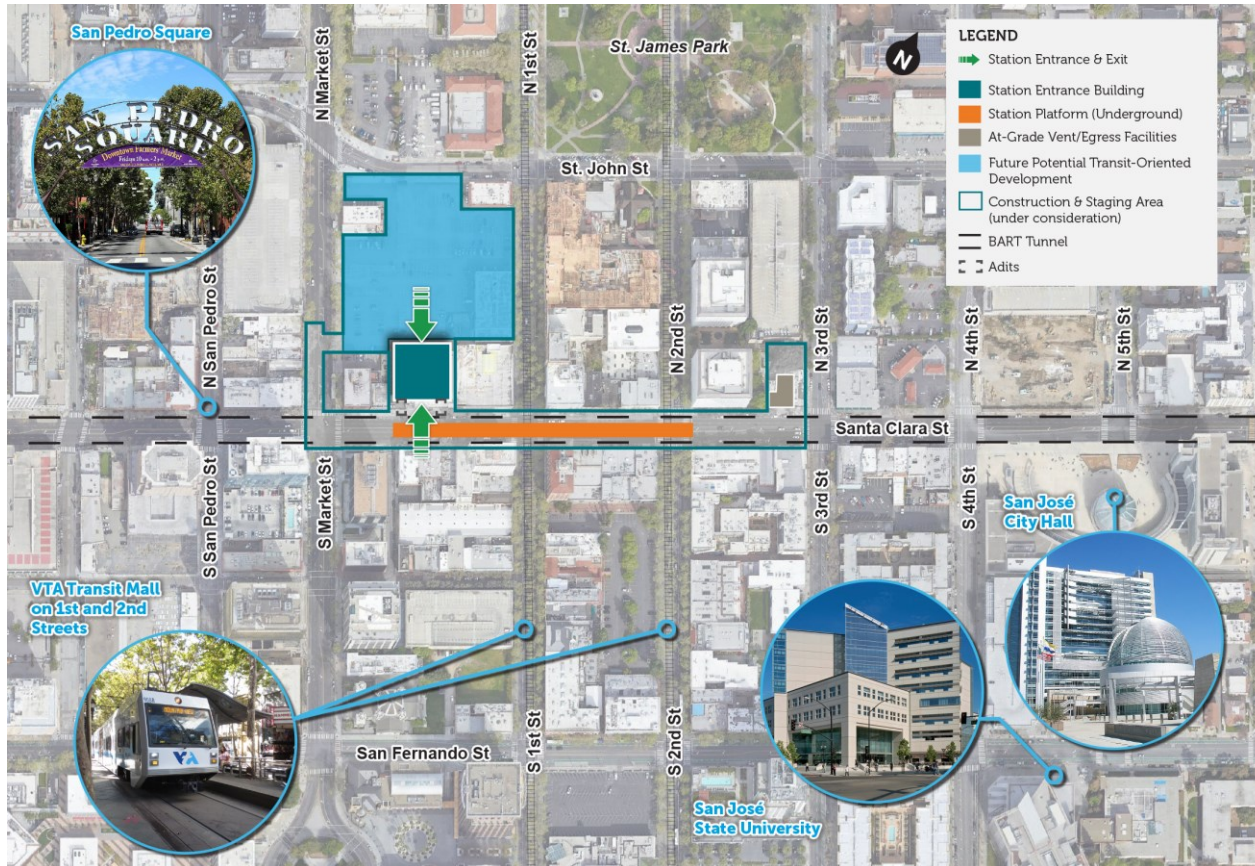


CURRENT as of 02/08/24 – FOR DISCUSSION ONLY

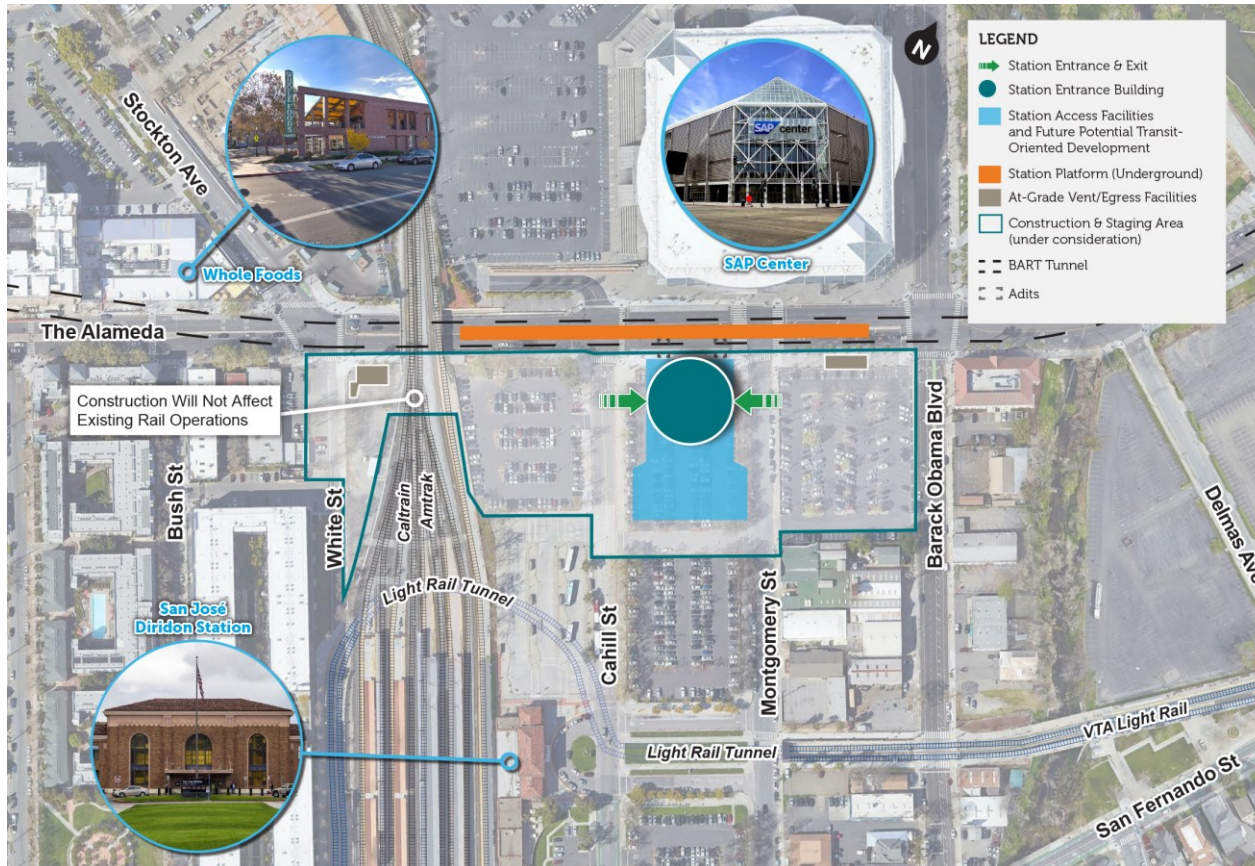
Downtown San José BART Station



Downtown San José BART Station



Diridon BART Station



CURRENT as of 02/08/24 – FOR DISCUSSION ONLY

Diridon BART Station

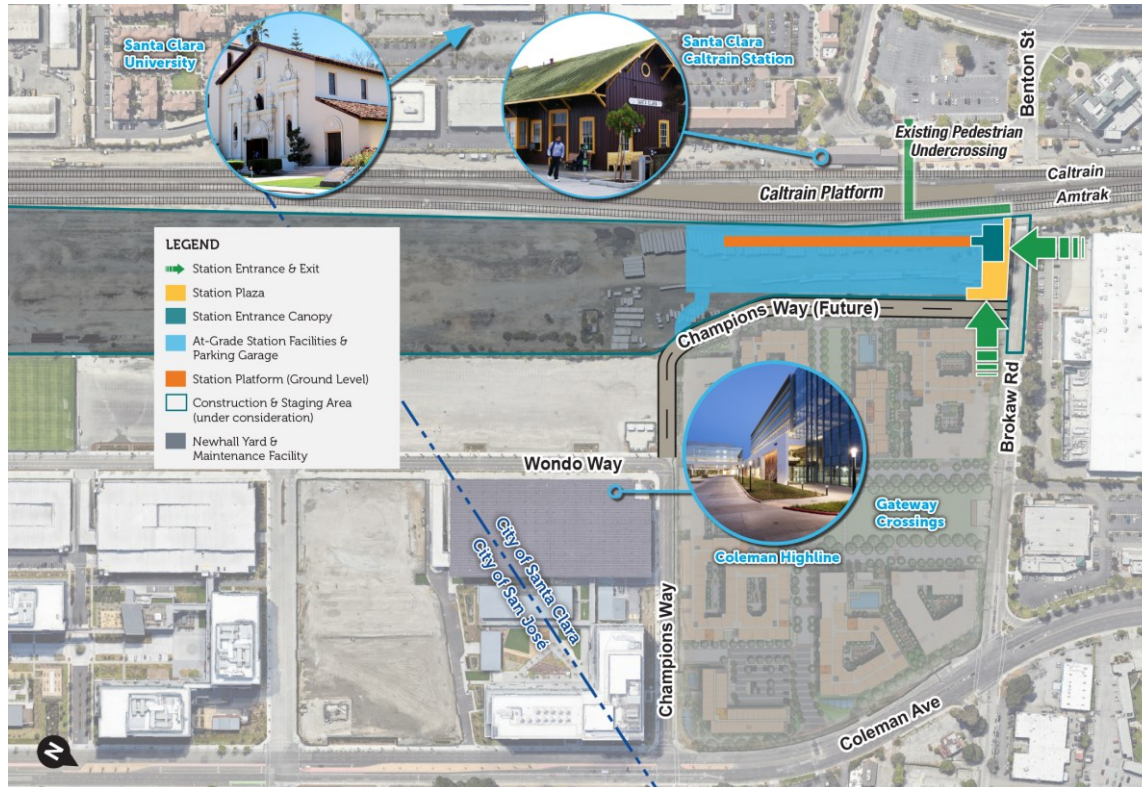


CURRENT as of 02/08/24 – FOR DISCUSSION ONLY

Santa Clara BART Station



Santa Clara BART Station



Previous Cross-Section - Santa Clara Station



Looking southeast from Brokaw Road

Path of travel to fare gates from east

Path of travel to fare gates from west (pedestrian tunnel)



Preliminary concept – Subject to change

	East Entrance	West Entrance	Concourse
--	---------------	---------------	-----------

Elevators	2	2	2
Escalators	2	2	2
Stairs	1	1	2
➤ Bicycle Stair Channel			

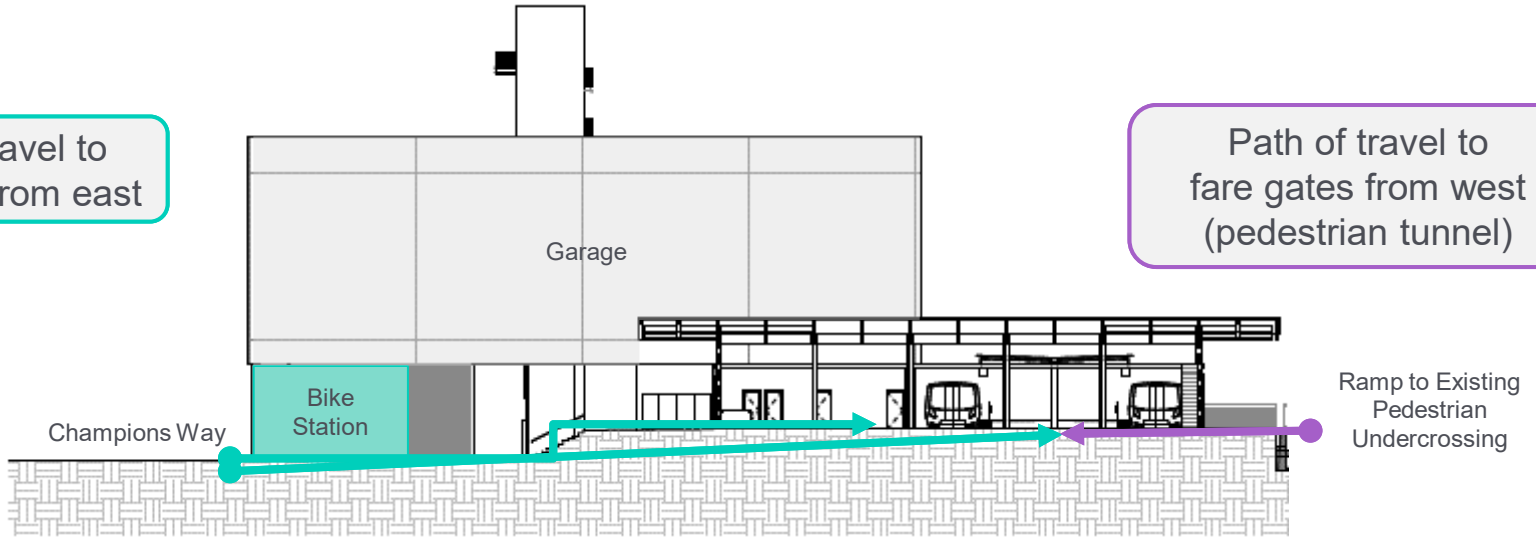
Current Cross-Section - Santa Clara Station



Looking s

Path of travel to fare gates from east

Path of travel to fare gates from west (pedestrian tunnel)



	North Entrance	Concourse
--	----------------	-----------

Elevators	Garage only - 2	0
Escalators	0	0
Stairs	1	0

*ADA access via sloping sidewalk (ramp) to front of station or garage elevators



Santa Clara Design Review Committee Recap

Kristen Mei, VTA



Community leaders and local government partners provided input to Project team on **select visual elements** of the stations over multiple DRC meeting series.

- **2021 DRCs** – discussion of the look and feel elements of VTA’s BSVII stations. This was shared with the public and staff representing VTA, BART, and the cities of San José and Santa Clara to receive input and refine select aesthetic concepts that will be included in the Requests for Proposals (RFPs) for the stations.
- **2023/2024 DRCs** – further discussion of specific station elements following design advancement.
 - Santa Clara Station DRC discussions were required prior to 60% design submission in early 2024.

Design Review Committees (DRCs)

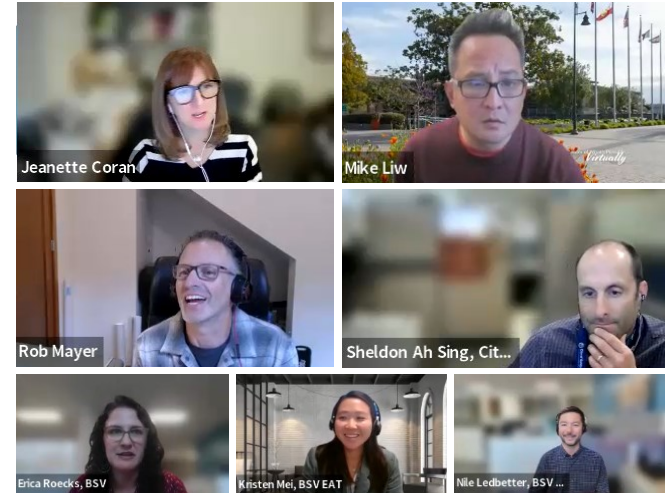


Role of the DRCs

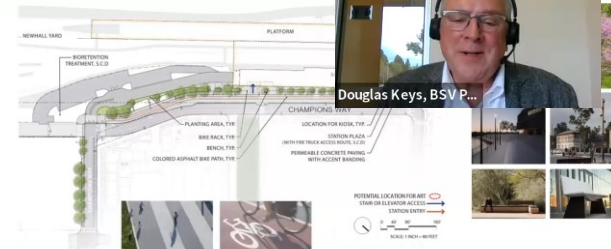
- A forum for community leaders & local government partners to provide input on select visual elements
- DRC feedback to fit within project parameters (requirements and budget)

Background and Goals

- Build from previous planning efforts
- DRC Schedules driven by design schedule of the project
- Santa Clara required earlier engagement for the 60% design
- Project team to incorporate DRC input, including RFPs



Landscape Site Plan





Station elements in this DRC process for Santa Clara

- Station Entrance Canopy Configuration
 - Platform Canopy Configuration
 - Integrated Parking Structure Facade
 - Public Station Area/Plaza & Landscaping
 - Planting & Trellises
 - Plaza and Feature Wall Lighting
 - Benches & Furniture
 - Station Signage
 - Retail Kiosk Locations and Bike Facilities
- Required for 60% Design Review

Santa Clara DRC Schedule



	Nov 17 2023	Dec 8 2023	Jan 5 2024	Jan 19 2024	Feb 16 2024	June 2024	Q3/Q4 2024
DRC Meeting #1 – DRC process & overview, station functionality, Project Architect presents station aesthetic concept options	✓						
DRC Meeting #2 – Present refined station aesthetic concept options		✓					
DRC Meeting #3 – Present refined station aesthetic concept options in a workshop format			✓				
DRC Meeting #4 – Workshop through refined station aesthetic concepts				✓			
DRC Meeting #5 – Present refined station aesthetic concepts to be included in Project design					✓		
Community Engagement – Online and in-person engagement						✓	
Further DRC Discussions							✓



28th Street Little Portugal DRC Station Elements

- Architectural treatment & material finish of Back of House
- Wayfinding tower
- Plaza Landscaping
- Floors
- Interior Walls/Identity
- Roof & Ceiling
- Art Locations

Downtown San Jose DRC Station Elements

- Ceiling & exterior marquee station signage
- Architectural & aesthetic treatment of East Emergency Ventilation Shaft
- Exterior & Interior Finishes
- Floors
- Art Locations

Diridon DRC Station Elements

- Architectural & aesthetic treatment of Back of House and West Vent Shaft
- Plaza – exterior space
- Exterior & Interior Finishes
- Floors
- Art Locations



Business Resource Program 2024 Plan

Bernice Alaniz, VTA

Business Resource Program Purpose & Criteria



- Purpose of the Business Resource Program (BRP) is to support small businesses during major construction
- A small business is defined as a:
 - For-profit business with up to 35 employees that holds an active business license
- Innovative single-bore tunneling method to minimize street level impacts and business interruption



Business Resource Program Elements



Signage and Wayfinding



BUSINESSES OPEN DURING CONSTRUCTION

OnPoint Camera, • Limitless Accounting • Café Mocha
Fitness Center • Food Creation • Sandwich Spot

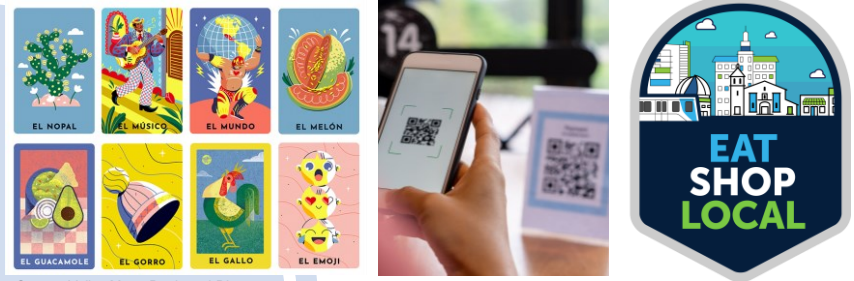
EAT SHOP LOCAL

Shop Local Marketing is a VTA sponsored program that provides business media and marketing assistance during the BSV Phase II construction. Make sure to check out the Preferred Vendor List to see how you can support local!

OPEN
BART SILICON VALLEY PHASE II EXTENSION PROJECT
VTA
BUSINESSES OPEN DURING CONSTRUCTION!
Your local dollars at work.

Valley Transportation Authority

Shop Local Marketing



EL NOPAL, EL MÚSICO, EL MUNDO, EL MELÓN, EL GUACAMOLE, EL GORRO, EL GALLO, EL EMOJI

EAT SHOP LOCAL

Source: Valley Metro Deals and Discounts



Source: SCORE Business mentorship and training



Source: Valley Metro South Central Community Office



Source: LA METRO Small Business Report Highlight

Small Business Resource Connections and Support

Direct Financial Assistance

Business Resource Program Schedule



For an in-depth update on the Business Resource Program, tune into VTA's February Board of Directors Workshop on February 23rd, at 9:30 am



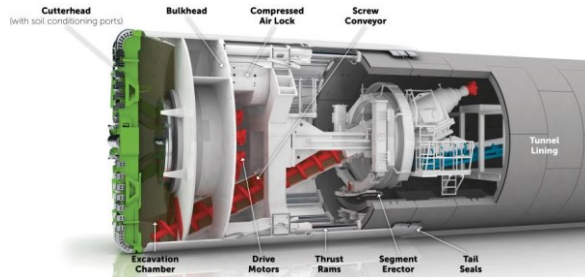
Early Construction Activities

Erica Roecks, VTA

Tunnel Boring Machine (TBM) Purchased



- VTA purchased its Tunnel Boring Machine (TBM) in November 2023
- The \$76 million TBM will be one of the largest machines ever to be built
- VTA will be launching a TBM naming contest in advance of the TBM arrival. *Stay tuned to learn more about that contest!*



Early Construction Activities



- Start of Early Works Construction at Newhall Yard/West Portal anticipated to begin in Q2 2024
- Activities include:
 - Site grading
 - Site development
 - Tunnel lining factory & TBM segment storage
 - Excavation of TBM shaft & materials
- Groundbreaking event to be scheduled





2024 CWG Workplan Review & Discussion

Kristen Mei, VTA

Santa Clara CWG 2024 Draft Work Plan



Subject	February 8, 2024	May 16, 2024	September 12, 2024	November 14, 2024	Future 2025 Topics
CWG Member Update	X	X	X	X	X
Phase II Program Update	X	X	X	X	X
FTA & Funding	X	X		X	X
Contracting	X				X
Real Estate		X		X	X
Construction Update	X	X	X	X	X
CP2 Specific Construction Transportation Management Plans (CTMPs)	X	X	X	X	X
Historic Building & Building Monitoring		X	X		X
Project Milestones	X	X	X	X	X
Community Engagement	X	X	X	X	X
Project Advocacy	X	X		X	X
Business Resource Program	X	X	X	X	X
General Outreach & Engagement	X	X	X	X	X
Design Review Committees	X	X			X
Station Area Planning & Adjacent Developments			X		X
City Planning Updates (Santa Clara Station Area Specific Plan)			X		X
Government Affairs Update				X	X



CWG Member Report Out

Share with your communities!



- Updated Project Benefits Brochure
- Updated Overview Benefits Factsheet
- Updated Station Factsheets
 - Santa Clara
 - Diridon
 - Downtown San José
 - 28th Street Little Portugal

What are other resources that you can share with your networks?

VTA'S BART SILICON VALLEY PHASE II EXTENSION PROJECT
Benefits Fact Sheet

Project accepted into the competitive federal New Starts Green Program, providing for a substantial federal contribution.

Direct Megaregional BART Connection between four major Bay Area Cities (San Francisco, Oakland, Fremont, San Jose)

VTA's BART Phase II Timeline
(800) 321-2348 / (408) 523-2330 TTY

Communities that nurture neighborhood identities and support local businesses and entrepreneurs.

Save time and money: 30 minutes for a 50-mile commute

Available transit for low-income communities

Transit-dependent riders annually to high-quality transit

5,600 student riders (San Jose State University/ Santa Clara University) are projected to use the system daily

VTA buses will continue to serve 44,000 weekly riders during construction

1 million riders annually to high-quality transit

Intermodal connection to Caltrain, electric light rail, and regional bus service made possible through the extension

VMT reductions are estimated to reduce annual CO₂ emissions by 58.9 tons and annual greenhouse gas emissions by 28,520 tons per year by 2040

Bay Area commuters will gain access to 3 million jobs in Silicon Valley - Adobe, Apple, Zoom, etc.

2 million people will gain access to 3.5 M Bay Area jobs in Santa Clara County

Minimal disruption to local businesses and housing within an approx. 50-minute walking distance to the alignment

Spur 60 million sq ft of new development and housing within an approx. 50-minute walking distance to the alignment

Activation of station sites and streets that foster mobility, vibrancy, activity, and culture in a transit-oriented community

Station Factsheets: Santa Clara Station, Diridon Station, Downtown San Jose Station, 28th Street Little Portugal Station

Report Back – Santa Clara



- Alden Smith, Holland Partner Group
- **Ana Vargas-Smith**, *Reclaiming Our Downtown*
- Grace Davis, *SCU Service & Social Justice (SCCAP)*
- David Cajigas, *Santa Clara University*
- Jack Morash, *South Bay Historic Railroad Society*
- John Urban, *Newhall Neighborhood Association*
- Jonathon Evans, *Old Quad Residents Association*
- Ron Miller, *Bellarmino College Preparatory*
- Ryan Morfin, *San José Earthquakes*
- Todd Trekell, *Hunter Partners*
- *Vacant*, *Silicon Valley Central Chamber of Commerce*

How have you been sharing information and updates on BSVII with your community?

What have you heard from your communities?

Next Steps

- Next CWG meeting:
May 16th, 2024
 - Phase II Update
 - Construction Update
 - Community Engagement