

# VTA'S BART SILICON VALLEY PHASE II EXTENSION PROJECT

Bringing Access and Opportunities to Santa Clara County



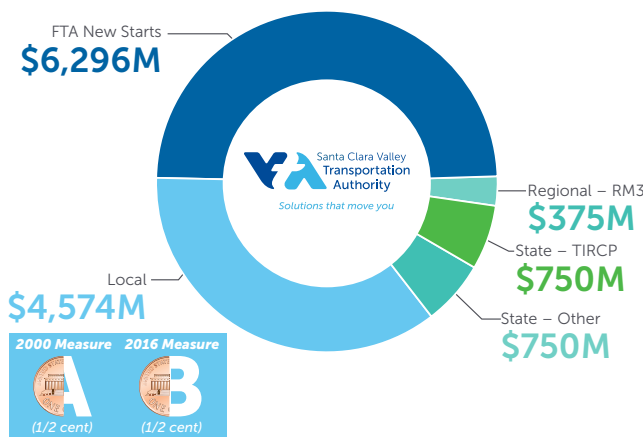
**VTA's BART Silicon Valley Phase II Extension Project (BSVII) is a transformative project that unites and empowers the community it serves, fulfilling the vision of "Ring the Bay" with high-quality, green rail transit.** Supported by strong local and state commitments, it prioritizes equitable access, including affordable housing, quality transit, and inclusive neighborhoods, while connecting South Bay residents to millions of jobs and generating 75,000 diverse job opportunities. VTA's vision is one of inclusion and progress, leaving a legacy for Santa Clara County and the greater Bay Area.

Learn more about the benefits and importance of capitalizing on this multi-billion-dollar transit investment to forever transform the cities of San Jose and Santa Clara.



### 2024 is Our Year! Tremendous Federal, State, and Local Financial Commitment in BART Extension Program

- With nearly \$1 billion from the Federal Government for Phase I, plus strong local support including Santa Clara County's \$1.2 billion for Phase I, this project demonstrates a universal commitment towards advancing transportation access.
- With nearly \$6.45 billion from the state and county already committed to BSVII, this project demonstrates a collective effort towards transportation and economic transformation and enhancement.
- These investments not only reflect the will of the voters but also alleviate congestion and foster job growth across Santa Clara County, enhancing mobility and economic benefits at every level.
- VTA is currently seeking approximately \$6.3 billion from the Federal Transit Administration (FTA) to nearly match the local and state funding already committed to complete the total funding needed to build the Project.



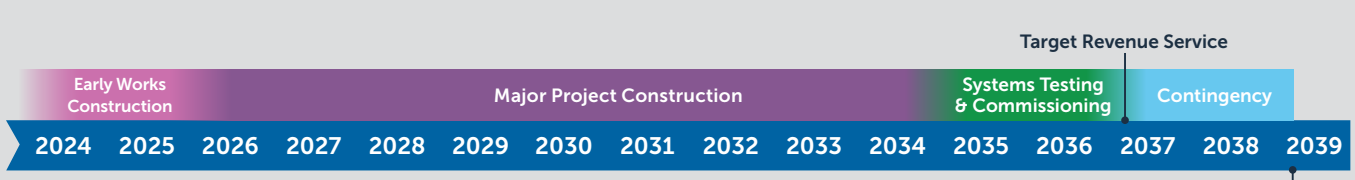
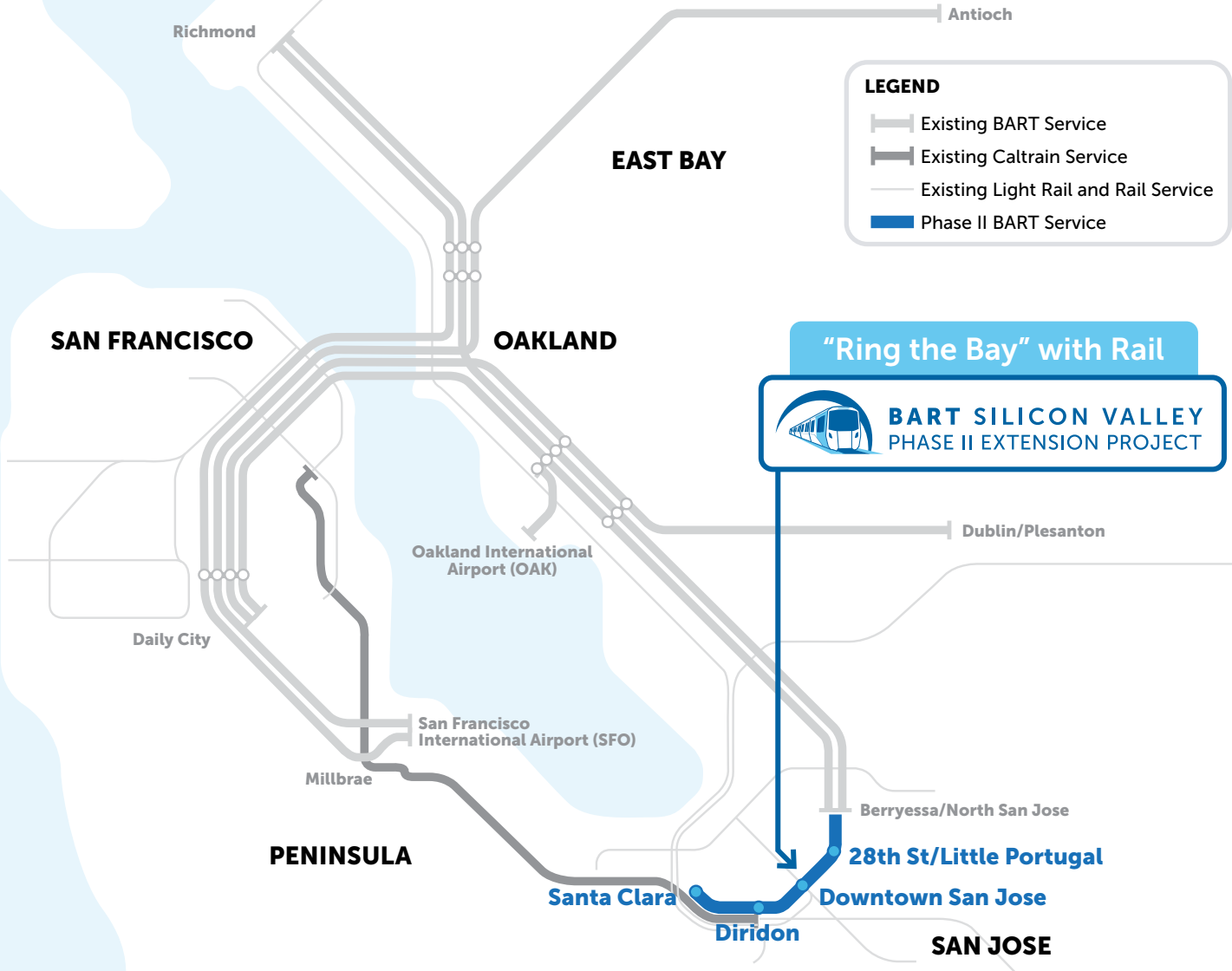
### Delivering on the Commitment to the 16-Mile Program, Completes the Long-Term Vision to Ring the Bay with Fast Frequent Rail Transit

- Completion of BSVII will connect Santa Clara County with the larger BART system, providing easy connections from the South Bay to areas in the North Bay served by BART and Caltrain.
- For a typical 50-mile commute in the Bay Area, taking BART will save riders an average of 30 minutes as opposed to driving.
- VTA's BSVII extension is fully separated from all auto, bicycle and pedestrian travel. This boosts the BART system's efficiency by reducing delays and enhancing reliability, and also helps provide safer streets by preventing pedestrian, bicycle, and automobile collisions.



### Job Creation

- Upon completion, the project will have generated 75,000 jobs, including both direct jobs within the construction industry and support positions, offering substantial employment opportunities.
- The Community Workforce Agreement within the Project Labor Agreement (PLA) ensures the project progresses efficiently and equitably by avoiding labor disputes and fostering a collaborative, socially responsible environment.
- The PLA reflects VTA's commitment to diversity, inclusion, and equity, promoting business diversity and career opportunities for underserved communities, thereby driving social change and economic empowerment in Santa Clara County.



Based on preliminary schedule for planning purposes.



### Sustain and Grow Silicon Valley Economy

- For every \$1 invested in the project, it results in \$5 of economic growth being generated for Santa Clara County, providing a strong economic return on investment for job creation and economic activity.
- By helping to improve transit connections for both employees and employers, the project will expand employment opportunities for 2 million people in Santa Clara County by providing access to 3.5 million Bay Area jobs.



### Delivering Equitable Transit Access

- The project aims to enhance public transportation access in East San Jose, improving connectivity for non-car households and ensuring easier access to healthcare and education.
- By offering reliable transit to healthcare facilities and supporting the academic missions of San Jose State and Santa Clara University with low-cost transit options, the project fosters a more connected community and provides new opportunities for residents.



### Affordable Housing for Diverse Workforce

The project reflects VTA's dedication to affordable housing and the creation of inclusive, vibrant communities around transit stations, planning for up to 60 million sq. ft. of new commercial and residential development near the four new stations.

- It also includes the principles of Transit-Oriented Communities, which promote accessible, sustainable living with a focus on affordable housing, a diverse workforce, and equitable access, ensuring economic growth and improved transit connections.



### Clean, Green Transit Alternative to Major Congested Commute Corridors

- The project will reduce traffic congestion and delays by providing a practical alternative to driving, thereby reducing the number of cars on the road and the stress it places on individuals and the environment.
- Recent studies shows that the project will provide the reduction of 56.4 million vehicle miles travelled (VMT) by reducing 50 tons of CO2 and 19,500 tons of Green House Gas emissions. This helps improve air quality and prevent further climate change.

### A Better-Connected and Improved Santa Clara County is on the Horizon

- ✓ The project will provide Santa Clara County residents with **efficient and reliable transportation** options, connecting them to job centers, educational institutions, and healthcare facilities both within the county and throughout the Bay Area.
- ✓ The commitment to providing **affordable housing** in station areas will directly benefit City of San Jose and City of Santa Clara residents struggling with housing affordability. This commitment addresses the cities' housing challenges by offering more accessible and affordable housing options, improving the overall quality of life for all residents.
- ✓ The project's focus on fair access, job creation, and affordable housing directly benefits Santa Clara County's diverse population, by **enhancing the overall well-being and quality of life for county residents**, ensuring that disadvantaged communities have better access to opportunities and essential services.

Renderings subject to change.

