



VTA BSVII Executive Monthly Progress Report
June 1, 2024 – June 30, 2024

Revision 0
July 26, 2024

Final for August 8, 2024, VTA's BSVII Oversight Committee Meeting

THIS PAGE INTENTIONALLY LEFT BLANK

Table of Contents

| | | |
|-----|------------------------------------------------|----|
| 1 | VTA BSVII EXECUTIVE SUMMARY | 1 |
| 1.1 | BSVII Highlights | 1 |
| 1.2 | Key Issues | 2 |
| 1.3 | Key Decisions | 3 |
| 1.4 | BSVII Overview / Summary | 3 |
| 2 | SCHEDULE SUMMARY | 6 |
| 2.1 | BSVII Summary Schedule | 7 |
| 2.2 | Milestone Summary | 8 |
| 2.3 | Summary narrative | 9 |
| 3 | COST SUMMARY | 10 |
| 3.1 | Summary Cost Report | 10 |
| 3.2 | Budget transfers and Contingency updates | 12 |
| 3.3 | Active Contracts | 12 |
| 3.4 | Funding Summary | 14 |
| 4 | CHANGE SUMMARY | 15 |
| 4.1 | Configuration Changes | 15 |
| 4.2 | CP2 Contract Amendments | 15 |
| 5 | RISK SUMMARY | 16 |
| 6 | OTHER UPDATES | 18 |
| 6.1 | KST (CP2 PDB) Contract Summary | 18 |
| 6.2 | Right of Way (ROW) | 18 |
| 6.3 | Utilities | 19 |
| 6.4 | Third Party and Permits | 19 |
| 6.5 | PMT Contract Summary | 19 |
| 6.6 | GEC Contract Summary | 21 |
| 6.7 | CMS Contract Summary | 22 |

Tables

| | |
|---------------------------------------------|---|
| TABLE 1 – CLOSED ISSUES AND ACTIONS | 2 |
| TABLE 2 – KEY OPEN ISSUES AND ACTIONS | 2 |
| TABLE 3 – KEY OPEN DECISIONS | 3 |
| TABLE 4 – KEY CLOSED DECISIONS | 3 |
| TABLE 5 – MILESTONE SUMMARY | 8 |

| | |
|--------------------------------------------------------------------------------------|----|
| TABLE 6 – JUNE 2024 MONTHLY SCHEDULE UPDATE SUMMARY | 9 |
| TABLE 7 – SUMMARY COST REPORT (IN \$M) * | 10 |
| TABLE 8 – SCC 80 BREAKDOWN (IN \$M)* | 11 |
| TABLE 9 – MAJOR CONTRACTOR SCC 80 CALENDAR YEAR 2024 BUDGET BREAKDOWN (IN \$M) | 11 |
| TABLE 10 – MAJOR ACTIVE CONTRACTS..... | 13 |
| TABLE 11 – OTHER ACTIVE CONTRACTS..... | 13 |
| TABLE 12 – FUNDING SUMMARY (IN \$M)..... | 14 |
| TABLE 13 – CONFIGURATION CHANGES..... | 15 |
| TABLE 14 – CP2 CONTRACT AMENDMENTS | 15 |
| TABLE 15 – RISK SUMMARY | 16 |
| TABLE 16 – TOP RISKS..... | 16 |
| TABLE 17 – CP2 (KST) COST SUMMARY AS OF MAY 2024 | 18 |
| TABLE 18 – REAL ESTATE STATUS SUMMARY | 18 |
| TABLE 19 – THIRD PARTY AGREEMENTS CATEGORIZATION | 19 |
| TABLE 20 – PROGRAM MANAGEMENT TEAM CONTRACT SUMMARY | 20 |
| TABLE 21 – GENERAL ENGINEERING CONSULTANT CONTRACT SUMMARY | 21 |
| TABLE 22 – CONSTRUCTION MANAGEMENT SERVICES CONTRACT SUMMARY..... | 22 |

Figures

| | |
|---------------------------------------------------------------------|----|
| FIGURE 1 – PROGRAM SUMMARY SCHEDULE..... | 7 |
| FIGURE 2 – BASELINE BUDGET AND EXPENDITURES BY CALENDAR YEAR* | 12 |
| FIGURE 3 – RISK HEAT MAP..... | 16 |
| FIGURE 4 – UTILITIES SUMMARY | 19 |

Appendices

APPENDIX A – MAJOR CONTRACTS SUBCONSULTANTS LIST

1 VTA BSVII EXECUTIVE SUMMARY

1.1 BSVII HIGHLIGHTS

1. **FTA Coordination:** FTA allocated \$500M in Federal FY 2024 Presidential Budget to BSVII. FTA is reviewing VTA's NSEE request and has notified VTA of FMOC's engagement and review of VTA's Financial Plan included as part of this request. FTA issued Final Readiness to Enter Engineering Report on May 28, 2024. VTA is updating the relevant supporting documentation, including management plans, in support of the FFGA application. Staff, board members, and the congressional delegation are engaged with the US DOT to advocate for the federal match percentage.
2. **Management Capacity:** No significant updates from the last report. VTA continues the recruitment process for the Construction Director.
3. **Schedule Updates:** Work continues to progress. VTA currently anticipates acceptance into New Starts Engineering in Q3 2024. Refer to Section 2 for summary narrative.
4. **Scope (Configuration) Updates:** Staff is reviewing potential design changes or updates that may be required at the underground stations (28th Street/Little Portugal, Downtown, and Diridon) due to recent stakeholder, community feedback and the VTA Board referral. In addition, KST and GEC proposed various design optimizations for potential cost savings that are being assessed by VTA. *(No major changes since past month)*
5. **Budget Updates:** No significant updates this month. Several budget transfers are in progress resulting in updates to contingency amounts. (such as CP2 amendments, Vehicle Procurement savings, etc.,). *(No major changes since past month)*
6. **Risks:** During this reporting period, no new risks were added. However, two active risks were retired and several risk items were updated.
7. **Right of Way (ROW):** No major updates this month. Right of Way work continues to progress. Refer to Section 6.2 for more information.
8. **Third Party / Utilities / Agency Coordination:** VTA continued coordination activities with external agencies, utility owners and third parties. Refer to Section 6.3 for Utilities summary and 6.4 for Third Parties summary.
9. **Key CP2 updates:**
 - a. VTA successfully organized and completed the groundbreaking event to kick off the Construction activities at West Portal on June 14, 2024. This event was attended by VTA Board members, San Jose / Santa Clara City Council members, FTA-PMOC, Workers Unions, Key Project Stakeholders and Project Staff.
 - b. KST continues preparing construction submittals and site-specific work plans and they continue to mobilize to the West Portal site. Continued mobilizing material, equipment and installing temporary site offices. Continued installing SWPPP measures and potholing to locate existing utilities. Started removing existing utilities including storm drain, sewer, water, air lines, communication lines. Started drilling a ground water well to supply temporary water to the grading operations. Setup temporary office trailers prior to setting up another round of temporary office trailers.
 - c. Multiple value engineering notice-to-proceed letters have been issued to KST. Requests for change proposals from KST have been received for several VE's. Collaboration continues between VTA and KST on evaluating proposed optimizations that could result in schedule benefits and cost savings.
 - d. KST took possession of DTSJ primary headhouse and partial possession of 28th St/Little Portugal sites.
 - e. KST started fence removal and replacement at West Portal

- f. EWP 7A – KST started installation of track monitoring devices at West Portal (UPRR & Caltrain)
 - g. KST submitted an initial proposal for the Tunnel Work Package on 6/28/2024. The proposal is under review by VTA.
 - h. KST is working on various design submittals; most design units are progressing towards 85% design, with the remaining units progressing towards 60% design (*No significant updates from last reporting period*).
10. **CP1, CP3 and CP4 updates** Design and technical specifications for Systems, Stations, and Yard facilities are progressing with the current General Engineering Consultant (GEC) team:
- a. Current focus on further progression of Value Engineering (VE) items. VTA is actively engaging BART in the review of VE items requiring DCM modification(s). Group-4 DCM Addenda nearing completion; developing Request for Variance procedure for next stage.
 - b. GEC completed the 60% interim Design for Systems, Newhall Yard, and Stations packages and transmitted for VTA review. VTA has reviewed and consolidating comments for issue to GEC.
 - c. Continuing the monitoring and facilitating the progress between the KST and GEC design teams in interface design requirements definitions.

1.2 KEY ISSUES

Table 1 outlines the issues closed during this reporting period.

Table 1 – Closed Issues and Actions

| Issue Description | Actions |
|----------------------------------------------|---------|
| No Closed issues/actions during this period. | |

Table 2 – Key Open Issues and Actions

| Issue Description | Actions |
|---------------------------------------------------------------------------------------------------------------------------------|------------------------------------------------------------------------------------------------------------------------------------------------------------------------------------------------------------------------------------------------------------------------------------------------------------------------------------------------------------------------------------------------------------------------------------------------------------------------------------------------------------|
| West Portal Enabling works and TBM launch structure are now on the critical path. | VTA issued NTP for EWP 3A to initiate site work. To maintain the schedule, VTA plans to issue a limited NTP for certain EWP 3C scope elements while the remaining scope of EWP 3 is negotiated and authorized. EWP 3C is being further split to EWP 3C.1 and 3C.2 to minimize potential schedule slippage. EWP 3C.1 is related to initial mobilization, procurement of subcontract and shop drawings. VTA issued an amendment in May 2024. Board action for EWP 3C.2 is expected in August/September 2024. |
| Observed misalignment between KST and VTA on the Progressive Design Build delivery approach from different points of reference. | VTA and KST are collaboratively working to minimize the impacts of this issue. A multi-session partnering effort began in March 2024 and continued into June 2024 with representatives from both parties to address and mitigate this issue. |

| Issue Description | Actions |
|-------------------------------------------------------------------------------------------------------------------------------------------------------------------------------------------------------------------------------------------|--------------------------------------------------------------------------------------------------------------------------------------------------------------------------------------------------------------------------------------------------------------------------------------------------------------------|
| Potential further design changes of the underground stations (Diridon, Downtown and 28 th Street/Little Portugal) due to stakeholder and community feedback | VTA Board issued a referral directing stakeholder requested changes to be incorporated into the design. VTA continues to develop a plan to respond to the requested changes, including the sharing of options to Community Working Groups in July/August. |
| FTA-PMOC indicated several areas of concern: <ul style="list-style-type: none"> i. Key Personnel staffing update ii. CP2 Early Work packages update iii. KST protection plans of top 10 utilities update | VTA is working to address FTA-PMOC concerns: <ul style="list-style-type: none"> i. VTA continues the recruitment process for the Construction Director. ii. Amendment for EWP 3C.1 was executed. Other EWPs are under negotiation with KST. iii. VTA working with KST to develop. |

1.3 KEY DECISIONS

Table 3 outlines the key open decisions as of this reporting period.

Table 3 – Key Open Decisions

| Description | Notes |
|-----------------------------------------------------------------------------------------------------------------------------------|------------------------------------------------------------------------------------------------------------------------------------------------------------------------------------------|
| FTA New Starts Entry to Engineering (NSEE) Approval. This action will set the total federal percentage share of the Project Cost. | VTA is waiting for FTA's decision regarding the NSEE approval. VTA is updating the relevant supporting documentation in support of the FFGA application to be filed after NSEE approval. |

Table 4 outlines the decisions that were closed during this reporting period.

Table 4 – Key Closed Decisions

| Description | Notes |
|----------------------------------------------|-------|
| No decisions were closed during this period. | |

1.4 BSVII OVERVIEW / SUMMARY

VTA's BART Silicon Valley Phase II (BSVII or Program) is an approximately six-mile extension of BART service from the Berryessa/North San José Station through Downtown San José and terminating near the Santa Clara Caltrain Station. BSVII is planned to include three below-ground stations (28th Street/Little Portugal Station, Downtown San José Station, and Diridon Station) and one at-grade station (Santa Clara Station), and a maintenance facility at Newhall Yard.

VTA and BART are active partners in the decision-making process for BSVII. The division of responsibilities between VTA and BART with respect to BSVII is governed by the VTA/BART Comprehensive Agreement executed on November 19, 2001.

BSVII will be implemented within, and serve, the City of San José, the City of Santa Clara, and the County of Santa Clara. The Program requires public works coordination, work in city ROW, traffic control, environmental compliance, and various other points of interface.

In February 2018, FTA and VTA issued the Final SEIS/SEIR. On April 5, 2018, VTA's Board of Directors certified the Final SEIR and approved BSVII. On April 26, 2018, the BART Board of Directors accepted the SEIR and, pursuant to the Cooperative Agreement, approved BSVII. FTA issued a ROD on BSVII on June 4, 2018.

VTA's Consultant Team provides program management, engineering services and engineering support to VTA and is comprised of a Program Management Team (PMT) and a General Engineering Consultant (GEC). Currently, both the contracts are active. VTA concluded the negotiations of the Construction Management Services Procurement that, after Board approval and VTA contract award, will become part of VTA's Consultant Team. VTA's Consultant Team will support VTA through annual work programs that set the level of support and responsibilities based on Program development requirements for each contract. Summary scope of services are outlined in Section 6.

BSVII comprises of four major construction contract packages (CPs) that are being planned with different delivery methods. CP1 (Systems), CP3 (Newhall Yard and Santa Clara Station), CP4 (Underground Stations) are currently being in Design by the GEC. Construction delivery will be through Design-Bid-Build delivery method. CP2 (Tunnel and Trackwork) is also currently in design phase and being designed by KST. CP2 is being delivered through Progressive Design Build delivery method.

In June 2022, Kiewit Shea Traylor – A Joint Venture (KST) was selected as PDB contractor for CP2 and initiated design services. KST scope includes design and construction of a single bore tunnel with side-by-side trackways, internal concrete structures, portals, adits, support of excavation for underground stations, trackwork, procurement of a tunnel boring machine, demolition, utility relocations and other enabling works. CP2 contract interfaces with the three underground station facilities along the alignment and the CP2 contractor will be responsible for constructing the support of excavation and any required adits connecting the underground stations with the tunnel.

BSVII is a federally funded project in conjunction with the Federal Transit Administration (FTA). VTA initially entered New Starts Project Development with FTA in 2016. As of 2018, VTA advanced the BSVII project under FTA's Expedited Project Delivery (EPD) Pilot Program. The project was conditionally approved for an EPD grant and FTA issued a Letter of Intent (LOI) on September 21, 2021 that granted pre-award authority to incur costs for engineering activities, utility relocation, real estate acquisition, and construction. In mid-2022, VTA began exploring alternative funding strategies, including re-entering the New Starts Program. On October 18, 2022, through letters to the FTA Associate Administrator for Planning and Environment and Region IX Administrator, respectively, VTA simultaneously requested re-entry into New Starts Project Development (NSPD) and a Letter of No Prejudice (LONP) that would preserve elements of the pre-award authority for project activities provided for by the EPD LOI. FTA approved both requests on December 1, 2022.

As part of the re-entry to the New Starts Program, updated preliminary baseline data (scope, cost, schedule and risk) was developed that incorporated the CP2 Innovations, CP2 Contractor Stage 1 Baseline schedule, and the updated design-bid-build (DBB) contract packaging approach for CP1, CP3 and CP4. This BSVII preliminary baseline schedule (data date of August 1, 2023) was submitted to FTA to support the FTA risk workshop. FTA, PMOC, and the BSV team, comprised of VTA, BART, PMT and GEC staff, participated in this three-day Risk Workshop on January 16-18, 2024.



VTA developed the new baseline schedule with a target Revenue Service Date (RSD) of Q2-2037. The risk assessment by FTA indicated a projected RSD of February 2039, inclusive of FTA-assessed schedule contingency. To support the ongoing application for New Starts CIG federal funding, VTA adopted the FTA-recommended schedule contingency that indicates a Q1-2039 RSD while managing to the aforementioned target RSD of Q2-2037.

Based on the risk assessment shared by the FTA/PMOC, FTA/PMOC proposed a total cost increase (excluding financing cost) of \$599M (approx.) of which \$524M (approx.) was attributed primarily to FTA's recommendation of higher escalation rate for the remaining duration of the Project. VTA adopted this recommendation. VTA developed an updated financial plan for the NSEE application resulting in a slight reduction in finance charges. Overall, the update resulted in a net program budget increase of \$509M. The new FTA eligible baseline budget totals \$12,746M.

2 SCHEDULE SUMMARY

Effective February 2024 reporting period, BSVII adopted the Baseline schedule. This baseline schedule (data date of March 1, 2024) was submitted to FTA as part of VTA's application to enter the New Starts Engineering Phase in March 2024. VTA completed the June 2024 schedule update (data date of July 1, 2024) and the summary can be found in Sections 2.1, 2.2 and 2.3.

- a. Section 2.1 summarizes the overall Program schedule in the new baseline schedule.
- b. Section 2.2 depicts the key milestones for the program captured in the new baseline schedule.
- c. Section 2.3 outlines the changes to the schedule based on the June 2024 schedule update in comparison to the baseline schedule and May 2024 schedule update.



2.1 BSVII SUMMARY SCHEDULE

Figure 1 provides the summary schedule based on the new baseline schedule. No changes this month.

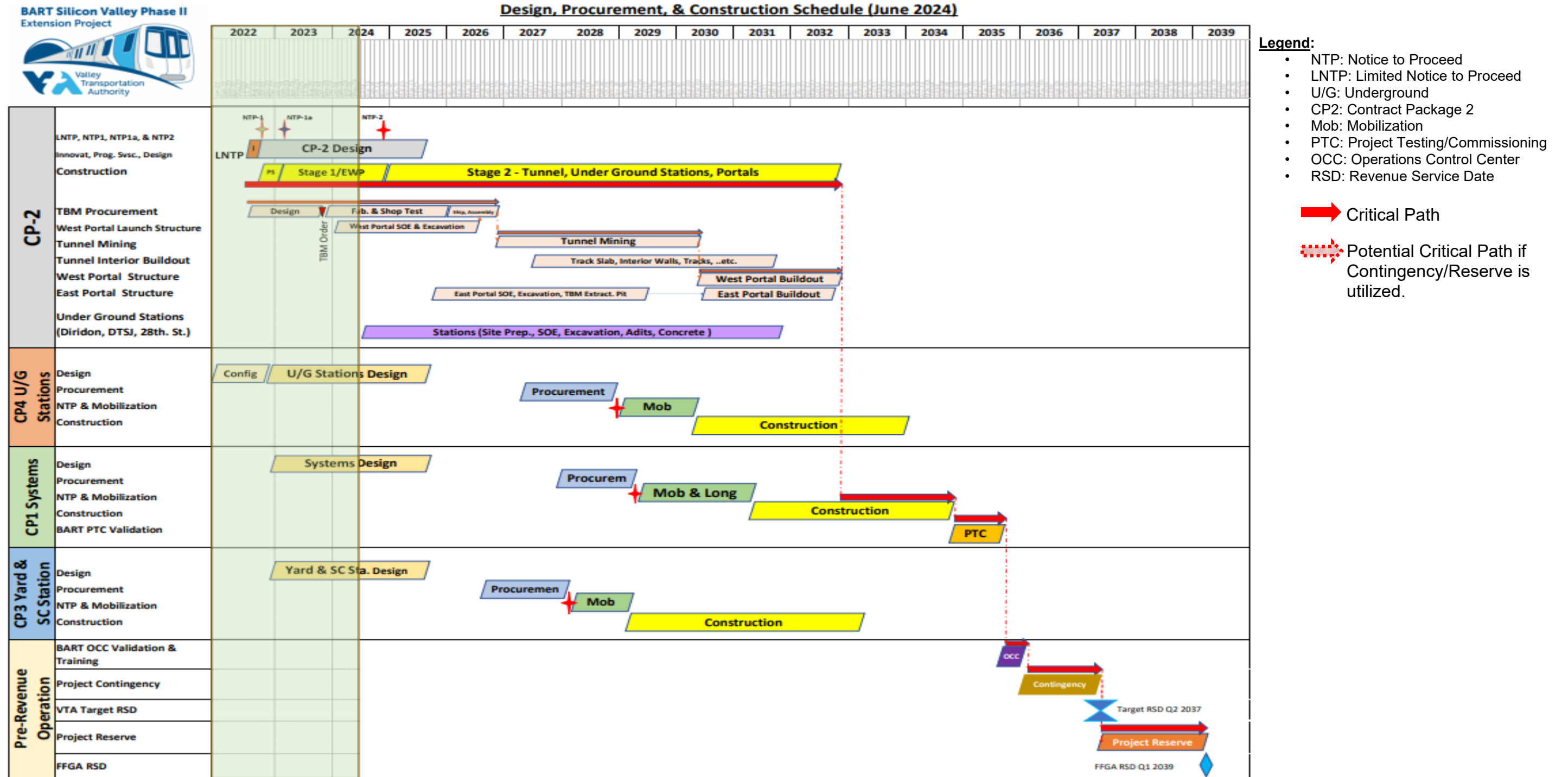


Figure 1 – Program Summary Schedule

2.2 MILESTONE SUMMARY

Table 5 provides the key milestone dates based on the June 2024 schedule update in comparison to the baseline schedule and the prior month forecast of May 2024 schedule update. High level summary narrative is provided in Section 2.3.

Table 5 – Milestone Summary

| Milestone Name (Bolded Underlined Dates = Actuals) | New Baseline (Per NSEE application) | Past month Forecast (May 2024) | Current Month Forecast (June 2024) |
|---------------------------------------------------------------|------------------------------------------------|-----------------------------------------------|---------------------------------------------------|
| Programwide | | | |
| BSVII Project start (FTA's NSPD approval) | <u>Q1 2016</u> | <u>Q1 2016</u> | <u>Q1 2016</u> |
| VTA Board approval of BSVII | <u>Q2 2018</u> | <u>Q2 2018</u> | <u>Q2 2018</u> |
| BART Board approval of BSVII | <u>Q2 2018</u> | <u>Q2 2018</u> | <u>Q2 2018</u> |
| FTA Issued ROD | <u>Q2 2018</u> | <u>Q2 2018</u> | <u>Q2 2018</u> |
| Submit EPD grant request | <u>Q2 2021</u> | <u>Q2 2021</u> | <u>Q2 2021</u> |
| VTA received EPD LOI | <u>Q4 2021</u> | <u>Q4 2021</u> | <u>Q4 2021</u> |
| VTA request to leave EPD, Enter NSPD | <u>Q4 2022</u> | <u>Q4 2022</u> | <u>Q4 2022</u> |
| FTA Issuance of LONP to NSPD | <u>Q4 2022</u> | <u>Q4 2022</u> | <u>Q4 2022</u> |
| VTA Request to enter NSEE | <u>Q1 2024</u> | <u>Q1 2024</u> | <u>Q1 2024</u> |
| FTA Issue Entry into NSEE | Q2 2024 | Q2 2024 | Q3 2024 |
| VTA Request to Execute FFGA | Q3 2024 | Q3 2024 | Q3 2024 |
| FFGA Execution | Q4 2024 | Q4 2024 | Q4 2024 |
| Start of BART OCC Validation | Q4 2035 | Q4 2035 | Q4 2035 |
| VTA Target Revenue Service Date | Q2 2037 | Q2 2037 | Q2 2037 |
| FFGA Revenue Service Date | Q1 2039 | Q1 2039 | Q1 2039 |
| CP2 - Tunnel and Trackwork | | | |
| CP2 LNTP | <u>Q2 2022</u> | <u>Q2 2022</u> | <u>Q2 2022</u> |
| CP2 NTP1 | <u>Q3 2022</u> | <u>Q3 2022</u> | <u>Q3 2022</u> |
| CP2 NTP1A | <u>Q1 2023</u> | <u>Q1 2023</u> | <u>Q1 2023</u> |
| CP2 Tunnel Work Package NTP | N/A | N/A | <u>Q1 2025</u> |
| CP2 NTP2 | Q4 2024 | Q4 2024 | Q1 2025 |
| CP1 – Systems | | | |
| CP1 RFP Issue | Q1 2028 | Q1 2028 | Q1 2028 |
| CP1 NTP | Q2 2029 | Q2 2029 | Q2 2029 |
| CP3 - Newhall Yard and Santa Clara Station | | | |
| CP3 RFP Issue | Q1 2027 | Q1 2027 | Q1 2027 |
| CP3 NTP | Q1 2028 | Q1 2028 | Q1 2028 |
| CP4 - Underground Stations | | | |
| CP4 RFP Issue | Q4 2027 | Q4 2027 | Q4 2027 |
| CP4 NTP | Q4 2028 | Q4 2028 | Q4 2028 |

2.3 SUMMARY NARRATIVE

Table 6 provides the summary narrative.

Table 6 – June 2024 Monthly Schedule Update Summary

Summary

The baseline schedule has been updated to reflect the progress through June 2024. The June 2024 progress schedule has a data date of July 1, 2024.

The target Revenue Service Date (RSD) and FFGA RSD did not change this month.

Major changes to the schedule

1. Right of Way: Updates to various ROW activities' Effective Possession dates caused both slippage and improvement in the schedule, respectively. All the tunnel easements effective possession dates have been adjusted to allow 12 months buffer between TBM passing and the early effective possession milestone. The changes in ROW dates did not affect the critical path.
2. Utilities: Updates to various utility owners' activities dates caused slippage in the schedule but did not impact the critical path. East Portal Temporary relocations slipped based on the latest information from utility owners.
3. Third party: Updates to various Third-Party Agreements activity dates slipped in the schedule but did not impact the critical path.
4. A new section was added to the CP2 construction schedule that includes detailed activities for planned CP2 cost proposals. The tunnel work package cost proposal was submitted by KST during this month.
5. New activities were added to the GEC design schedule that include value engineering items (completed), work related to KST proposed optimizations, and the GEC proposed design refinement concepts.

Critical path summary

The critical path was not impacted this month. The following items below are on critical path as of this update:

1. West Portal: Enabling work and Launch Structure (CP2)
2. TBM Assembly and testing on site (CP2)
3. Tunnel mining from West Portal to East Portal (CP2)
4. West Portal: Final concrete work and finishes (CP2)
5. West Portal: Train Control Building (CP2)
6. Newhall Yard: Systems installation (CP1)
7. Phase 2 testing by CP1 Contractor with BART oversight
8. BART OCC Validation / Testing

The following items below are near critical as of this update (less than two months of float):

1. CP2 –TBM Procurement, Fabrication, and delivery
2. TBM Plant temporary power at the West Portal

Contingency duration drawdown

None to report.

Major milestones missed this period

None to report.

Major events forecasted for next reporting period

Execution of Amendment #5; ongoing Early Works Construction at Newhall Yard (West Portal)

3 COST SUMMARY

Effective February 2024 reporting period, BSVII adopted the Baseline Budget as submitted to FTA in Q1-2024 as part of VTA's application to enter the New Starts Engineering Phase. Section 3.1, 3.2, 3.3 and 3.4 reflect the baseline budget information and relevant cost information through this reporting period.

3.1 SUMMARY COST REPORT

This section provides the summary cost report by Standard Cost Code (SCC) through this reporting period. Table 7 outlines the baseline budget by SCC, commitments in VTA's financial system (SAP) and forecasted expenditures as of this reporting period. Table 8 provides SCC 80 Baseline Budget breakdown rounded to closest millions. The new baseline budget reflects the time-phased information using the calendar year basis. Figure 2 outlines the draft cashflow by calendar year based on the new baseline budget to FTA. The cashflow is subject to change in the upcoming months. The commitments increased in SCC 80 due to incorporation of executed construction management services task order and CP2 amendments in SAP. SCC 70 commitments currently include the first payment and bond value for remaining payments.

Table 7 – Summary Cost Report (in \$M) *

| SCC (w/summary scope) | Baseline Budget | Commitments | Actuals Paid | Accruals** |
|------------------------------------------------------------------------------------------------------------------------------------------------------------------------------------------------------------------------------------------------|-----------------|----------------|----------------|---------------|
| 10 - GUIDEWAY & TRACK ELEMENTS (Includes West Portal, East Portal, TBM, Tunneling, Segmental Lining and Trackwork) | \$2,900 | \$148 | \$50.4 | \$2.0 |
| 20 – STATIONS (All station costs, including rough grading, excavation, structures, enclosures, finishes, and equipment) | \$2,037 | \$0 | \$0 | \$0 |
| 30 - YARDS, SHOPS (All yard and support facilities, including rough grading, excavation, support structures, finishes, and equipment, Yard track) | \$352 | \$0 | \$0 | \$0 |
| 40 - SITEWORK & SPECIAL CONDITIONS (Enabling works, hazmat, environmental mitigation, site structures, landscaping, temporary facilities, Utility relocations by owners; Temporary TBM Power, Diridon Temporary Parking; other indirect costs) | \$582 | \$137 | \$30.1 | \$4.2 |
| 50 - SYSTEMS (All train control and signals, traction power, communications, fare collection, and central control) | \$1,409 | \$0 | \$0 | \$0 |
| 60 - ROW, LAND, EXIST. IMPROV. | \$241 | \$119 | \$113 | \$0.2 |
| 70 - VEHICLES | \$205 | \$12 | \$1.1 | \$0 |
| 80 - PROFESSIONAL SERVICES (incl. VTA, BART, Consultants (PMT, GEC, CM, others), OCIP, Third Parties, Legal, CP2 Design, IT, Office lease, other supporting costs) | \$2,973 | \$1004 | \$807.9 | \$35 |
| 90 - UNALLOCATED CONTINGENCY | \$1,657 | \$0 | \$0 | \$0 |
| 100 - FINANCE CHARGES | \$390 | \$0 | \$0 | \$0 |
| TOTAL | \$12,746 | \$1,419 | \$1,002 | \$41.4 |

Cost is rounded to closest million

*Data excludes FTA ineligible/revised cashflow projections

**Accruals may include invoices received that are under review and/or forecast of work performed that is not yet invoiced

Table 8 – SCC 80 breakdown (in \$M)*

| SCC 80 Category breakdown | Baseline Budget (in \$M) |
|----------------------------------------------------------------------------------------------------------------------------------------------------------------------------------------------------------------|--------------------------|
| Project Development, Engineering, and Final Design <i>(includes VTA, BART, Consultants, CP2 Design (by KST), Utility Owners Design)</i> | \$774 |
| Project Management for Design and Construction; Design Support During Construction; Construction Administration and Management <i>(includes VTA, BART, Consultants, Office costs, IT, Supporting costs)</i> | \$1,593 |
| Professional Liability Insurance and OCIP | \$435 |
| Legal; Permits; Review Fees by other agencies, cities, Third Parties, etc. | \$78 |
| Surveys, Testing, Investigation, Inspection <i>(includes VTA, BART, Consultants)</i> | \$27 |
| Start up <i>(includes VTA, BART, Consultants)</i> | \$66 |
| TOTAL | \$2,973 |

Table 9 outlines the calendar year 2024 forecasted baseline budget breakdown for major contractors.

Table 9 – Major Contractor SCC 80 Calendar Year 2024 Budget breakdown (in \$M)

| SCC 80 – Major Contractor/Consultant | Category | Calendar Year 2024 Baseline Budget (in \$M) ² |
|--------------------------------------------------|--------------------------------------------------------------|----------------------------------------------------------|
| CP2 (KST JV) ¹ | Engineering/Final Design | \$148 |
| Program Management Team (HNTB-WSP JV) | Project Management for Design and Construction | \$49 |
| General Engineering Consultant (MMD-PGH Wong JV) | Engineering/Final Design; Design Support During Construction | \$111 |
| Construction Management Consultant (Bechtel) | Construction Administration and Management | \$7 |
| TOTAL | | \$315 |

¹KST JV has other forecasted costs in other SCCs.

²Baseline Budget refers to forecasted expenditures rounded to closest millions. Task Orders/Commitments are not yet authorized for the entire calendar year.

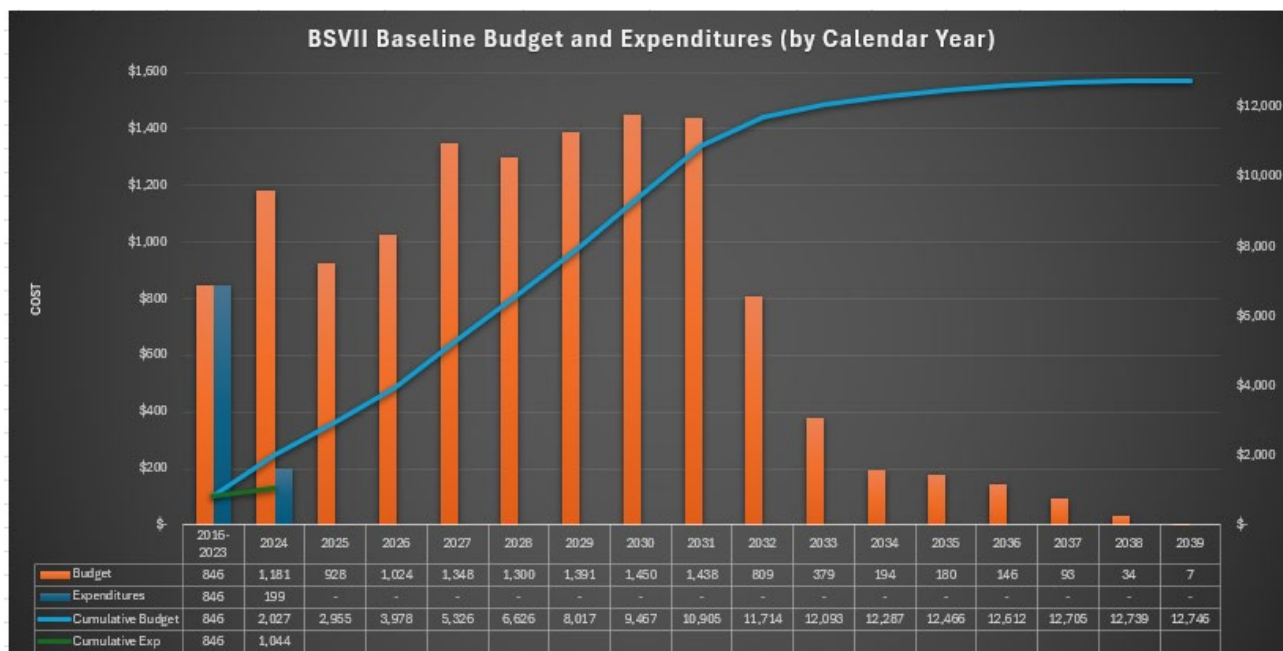


Figure 2 – Baseline Budget and Expenditures by Calendar Year*

3.2 BUDGET TRANSFERS AND CONTINGENCY UPDATES

This section outlines the work in progress and executed budget transfers to date against the baseline budget.

Executed this period

None to report.

Under development or under final review:

1. Budget and contingency updates to reflect executed CP2 Amendments to date, including utilization of contingencies. These updates will be reflected in Table 7 in upcoming reports.
2. Budget transfers to reflect scope transfers between CPs.
3. Budget updates reflecting savings from BART Vehicles contract execution.

3.3 ACTIVE CONTRACTS

During the month of April 2024, the Construction Management Services contract was executed with Bechtel. There were other amendments executed as part of the BSVII program budget that impacted the commitments in SAP. This did not impact the Major active contract values shown in Table 10, Table 10 provides a list of major active contracts and Table 11 provides a list of other active contracts. Appendix A provides the subconsultants and subcontractors for the Major Active Contracts identified in Table 10.

Table 10 – Major Active Contracts

| Contract No. | Vendor Name | Description | Total Contract Value |
|--------------|------------------------------------|-----------------------------------------------|----------------------|
| V22021 | Kiewit Shea Traylor Joint Venture | BSVII CP2 Tunnel and Trackwork PDB Contractor | \$576.8M |
| S17017 | HNTB/PB Joint Venture | BSVII Program Management Services | \$191.6M |
| S18088 | MMW Joint Venture | BSVII General Engineering Services | \$342.8M |
| V23174 | Bechtel Infrastructure Corporation | BSVII Construction Management Services | \$490.8M |

Table 11 – Other Active Contracts

| Contract No. | Vendor Name | Description |
|--------------|--------------------------------------|---------------------------------------------------|
| P20071 | Insight Public Sector Inc, | BSVII CISCO SMARTNET |
| S16043 | Hexagon Transportation, Consultants | TRAFFIC FORECASTING SERVICES |
| S18202 | Comcast Cable Communications Mgmt., | BSVII COMCAST VOIP INSTALLATION & CONFIG |
| S18210 | Kastle Systems of Los Angeles, Par | BSVII CARD READERS FOR GATEWAY 2033 |
| S18230 | State Water Resources Control Board | BSVII COST RECOVERY OVERSIGHT |
| S19216 | JRP Historical Consulting LLC, | BSVII HISTORICAL ARCHITECTURAL SERVICES (On Call) |
| S20020 | Transit Project Strategies LLC, | BSVII PROGRAM DELIVERY CONSULTING SVCS |
| S20134 | JH Albert International Insurance, | BSVII OCIP FEASIBILITY STUDY SERVICES |
| S20161 | Nossaman LLP, | BSVII CONTRACT DEV & PROGRAM LEGAL ADV |
| S20248 | Peninsula Corridor, Joint Powers Bo | BSVII COOPERATIVE AGREEMENT |
| S20250 | Dodge Data & Analytics, | BSVII PO FOR ADVERTISING SOLICITATIONS |
| S21023 | Kiefer Consulting Inc, | BSVII TECHNOLOGY PROFESSIONAL SERVICES |
| S21171 | Lubin Olson & Niewiadomski LLP, | BSVII LUBIN OLSON & NIEWIADOMSKI LLP |
| V21080 | PEACOCK ENTERPRISES INC., DBA PEACO | BSVII ADOBE SOFTWARE LICENSES |
| V21113 | Montague Premier Inc, | BSVII PROJECT VEHICLES CAR WASHES |
| V21220 | Kastle Systems of Los Angeles, Par | BSVII ACCESS CONTROL/CCTV 2830 DELACRUZ |
| V21225 | DLT Solutions LLC, DLT Solutions | BSVII AUTODESK AEC LICENSES |
| V21236 | City of San Jose, | BSVII MOU TO CONSULT AND COOPERATE |
| V21216 | Santa Clara City of, Finance Depart | BSVII MOU TO CONSULT AND COOPERATE |
| V21263 | Pacific Gas & Electric Company, | BSVII TEMPORARY POWER STUDY |
| V21264 | Pacific Gas & Electric Company, | BSVII TUNNEL IMPACT STUDY |
| V21339 | Sprint, Sprint Solutions Inc | SPRINT UTILITY RELOCATION |
| V21345 | Consultant Specialists Inc, | BSVII IT STAFFING |
| V21346 | Environmental Systems Research, Ins | BSVII ARCGIS LICENSES |
| V21355 | Synergy Corporate Technologies, Ltd. | BSVII NINTEX WORKFLOW ENTERPRISE EDITION |
| V21366 | Perforce Software, Inc., | BSVII HELIX REQUIREMENTS MANAGEMENT |
| V21367 | DLT Solutions LLC, DLT Solutions | BSVII AUTODESK BIM 360 SUBSCRIPTION |
| V22016 | San Jose Water Company, | BSVII SJWC FACILITY RELOCATIONS |
| V22171 | HDR Engineering Inc, | BSVII FINANCIAL MODELING SUPPORT |



| Contract No. | Vendor Name | Description |
|--------------|-------------------------------------|-----------------------------------------------|
| V23045 | Union Pacific Rail Road | PRELIMINARY ENGINEERING |
| V21238 | PEACOCK ENTERPRISES INC., DBA PEACO | BSVII BLUEBEAM REVU EXTREME OPEN LICENSE |
| S16050 | Meyers Nave, A Professional Corpora | BSVII PHASE II LEGAL SERVICES |
| S18313 | Hanson Bridgett LLP, | BSVII DESIGN BUILD LEGAL SERVICES |
| V21216 | CVE Contracting Group Inc. | LAS PLUMAS ABATEMENT AND DEMOLITION |
| V22188 | Mythics, Inc, | ORACLE ACONEX Document Control Software |
| V23009 | PEACOCK ENTERPRISES INC., DBA PEACO | BSV II- HPE Hardware & Software Support |
| V23017 | Cushman & Wakefield | Commercial Broker to Sublease Gateway Offices |
| V23104 | Insight Public Sector, Inc. | Workflow Management System |
| P18240 | PCMG Inc, | BSVII PROJECT OFFICE DESKTOP COMP |
| S20166 | San Francisco Bay Area Rapid, Trans | BSVII BART IMPLEMENTATION LETTER #43 |
| V21150 | Insight Public Sector, Inc., | BSVII SOPHOS INTERCEPT X |
| V22239 | Insight | DTV CCTV RECORDER |
| V22240 | SHI | DTV CCTV SWITCH |

3.4 FUNDING SUMMARY

Table 12 – Funding Summary provides a snapshot of funding summary. Anticipated funding is per the SCC workbook submitted under NSEE application in March 2024. Appropriations, and expended costs through June 2024 are from VTA’s Financial System (SAP). A presentation on the project’s financial plan was provided at the April 2024 VTA Board of Directors Workshop.

Table 12 – Funding Summary (in \$M)**

| Funding Source | Anticipated Planned Funding | Appropriated* | Expended |
|----------------------------------|-----------------------------|----------------|--------------|
| Federal - FTA New Starts Program | \$6,296 | \$0 | \$0 |
| TIRCP | \$750 | \$0 | \$0 |
| Other State Funding | \$750 | \$0 | \$0 |
| Regional Measure 3 (RM3) | \$375 | \$0 | \$0 |
| 2000 Measure A Sales Tax | \$2,062 | \$1,604 | \$632 |
| 2016 Measure B Sales Tax | \$2,512 | \$621 | \$362 |
| Total Sources of Funds | \$12,746 | \$2,225 | \$995 |

Cost is rounded to closest million

* Appropriations by the VTA Board through FY2025 forecasted \$5,424M but Table 11 only show the grantor authorized amounts and excludes MTC/FTA allocated funds.

**Due to VTA fiscal year-end closing process, the amounts above are preliminary through the end of June. The July report will reflect final actuals through the month of July.

4 CHANGE SUMMARY

This section outlines configuration changes at the program level and CP2 contract amendment status.

4.1 CONFIGURATION CHANGES

All the prior configuration changes have been superseded by the new baseline submittal to FTA. No configuration changes (in reference to the new baseline information) were executed in the month of June 2024.

Summary of configuration changes to be provided after VTA's acceptance into New Starts Engineering.

Status of Configuration Changes are shown in Table 13.

Table 13 – Configuration Changes

| CCS-ID | CCS - Title | Status | CP* | RSD impacts | Net Budget Impact |
|----------|-------------------------------------|------------|-----|-------------|-------------------|
| NSEE-001 | Approved Value Engineering Concepts | In Process | PWD | TBD | TBD |

*CP = Contract Package (CP1, 2, 3, 4, or PWD-Program-Wide)

4.2 CP2 CONTRACT AMENDMENTS

No amendments were executed in June 2024.

Status of identified amendments is reflected in Table 14.

Table 14 – CP2 Contract Amendments

| Amendment-ID | Scope | Status | Schedule impacts | Overall Budget Impact | Estimated Value* |
|--------------|-----------------------------------|----------|---------------------------------------------------------------------------------------------------------------------------------------------------------|-----------------------|------------------|
| 001 | TBM Procurement (EWP 1A) | Executed | Overall schedule and budget were not impacted. Budget transfer for EWP1A was executed in January 2024; Budget transfer for Amendment #3 is in progress. | | \$144M |
| 002 | Additional Design Funds | Executed | | | \$43M |
| 003 | EWP 3A, 7A, 11A, Stage 1 Bond | Executed | | | \$110M |
| 004 | EWP 3C.1 – LNTP, EWP 11B, PCO-002 | Executed | TBD | TBD | \$44M |

*Cost rounded to closest millions

5 RISK SUMMARY

This section covers the summary risk updates as of the June 2024 reporting period. During this reporting period, two existing risks were retired, and no new risks were added as summarized in Table 15.

Table 15 – Risk Summary

| Risk Category | As of May 31, 2024 | As of June 30, 2024 | Change |
|--------------------|--------------------|---------------------|-----------|
| High | 15 | 15 | 0 |
| Med | 59 | 57 | -2 |
| Low | 32 | 32 | 0 |
| Total Risks | 106 | 104 | -2 |

Figure 3 is the active risk heat map based on updates through this reporting period.

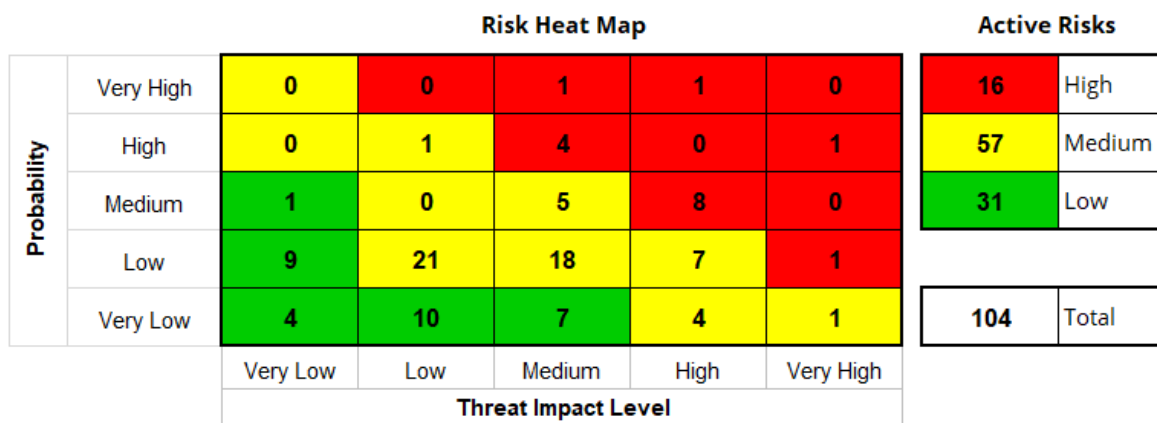


Figure 3 – Risk Heat Map

Table 16 shows the top risks (threats and opportunities) identified in the current risk register as of this reporting period.

Table 16 – Top Risks

| Risk ID | Risk Title | Action Plan |
|---------|-----------------------------------------------------------------------------------|---------------------------------------------------------------------------------------------------------------------------------------------------------------------------------------------------------------------------------------------------------------------------------------------------------------------------------------------|
| BSV-203 | Higher cost of the West Portal TBM launch facility | Explore limited NTP for KST to start construction. |
| BSV-196 | Failure to secure a lump-sum price with KST resulting in Off-ramp. | VTA initiated development of an off-ramp plan. |
| BSV-005 | Unanticipated damage to historic buildings, critical utilities & other structures | KST to develop instrumentation and monitoring programs for sensitive structures. VTA to support KST in obtaining access as appropriate. |
| BSV-214 | Diridon Station design changes due to stakeholders' input | Reviewing the different facilities and project elements in the Diridon area in coordination with the Diridon Business Case Team, City staff and design optimization effort underway; A joint task force including other Diridon area stakeholders has been established to collaboratively review design alternatives and assess trade-offs. |

| Risk ID | Risk Title | Action Plan |
|---------|------------------------------------------------------------------------------------------|-------------------------------------------------------------------------------------------------------------------------------------------------------------------------------|
| BSV-029 | VTA financial capacity / funding plan to finance potential future project cost increases | Update the financial plan following completion of cost estimates and agreement with FTA on project cost. |
| BSV-036 | General construction labor shortage / labor premiums | Continue to monitor economic trends and impacts; increase industry outreach efforts. |
| BSV-096 | Testing and Commissioning delays due to various factors | Schedule includes significant contingency, which is currently allocated towards the end of the project during testing phase (late 2030's). Implement Phase 1 lessons learned. |

6 OTHER UPDATES

6.1 KST (CP2 PDB) CONTRACT SUMMARY

Table 17 outlines the Cost summary of CP2 Contractor.

Table 17 – CP2 (KST) Cost Summary through June 2024

| Item | Cost (in \$M) |
|-------------------------------------------------------------------|---------------|
| Original Contract Value (Stage 1 only) ^{***} (A) | \$235.0 |
| Amendments issued to Date (B) | \$341.8 |
| Revised Contract Value (Stage 1 only) ^{***} (C) =(A)+(B) | \$576.8 |
| Expenditures this period* | \$12.7 |
| Expenditures to Date* (D) | \$304.1 |
| Remaining Authorization Value ^{**} (C) - (D) | \$272.7 |

*Expenditures include actuals, accrual values that are not yet approved by VTA, retention and are subject to change.

**Remaining Authorization Value is subject to change based on expenditure approximations.

*** Stage 1 Bond Value that was previously captured under Original Contract Value until Jan 2024 reporting period is now under Amendments.

6.2 RIGHT OF WAY (ROW)

Table 18 – Real Estate Status Summary below provides a high-level summary of the acquisition status as of end of June 2024. Right of Way work continues to progress.

Table 18 – Real Estate Status Summary

| PROJECT ACQUISITION STATUS | | | | | |
|------------------------------------|-----------|---------------------|--------------------------------|----------------------------|-----------|
| Description | Total | Possession Obtained | Parcels in Acquisition Process | Relocation ^{****} | |
| | | | | Required | Completed |
| Total Parcels* | 77 | 26 | 51 | 37 | 12 |
| BPE (& Other Takes ^{**}) | 4 | 0 | 4 | 3 | 0 |
| Full Fee Only | 9 | 7 | 2 | 15 | 8 |
| Multiple Takes (not incl. BPEs) | 3 | 0 | 3 | 15 | 4 |
| Tunnel Easement | 47 | 19 | 28 | 0 | 0 |
| Roadway Easement | 3 | 0 | 3 | 0 | 0 |
| Utility Easement | 4 | 0 | 4 | 0 | 0 |
| Temporary Construction Easement | 7 | 0 | 7 | 4 | 0 |

* Six Building Protective Easements were removed due to elimination of DTSJ Secondary HH; Pending Property Protection Study report

** BPE: Building Protective Easements - Parcels may have additional acquisitions, such as Tieback Easement

**** Represents total tenants to be relocated, not parcels

6.3 UTILITIES

Figure 4 outlines the summary status of Utility Relocations.

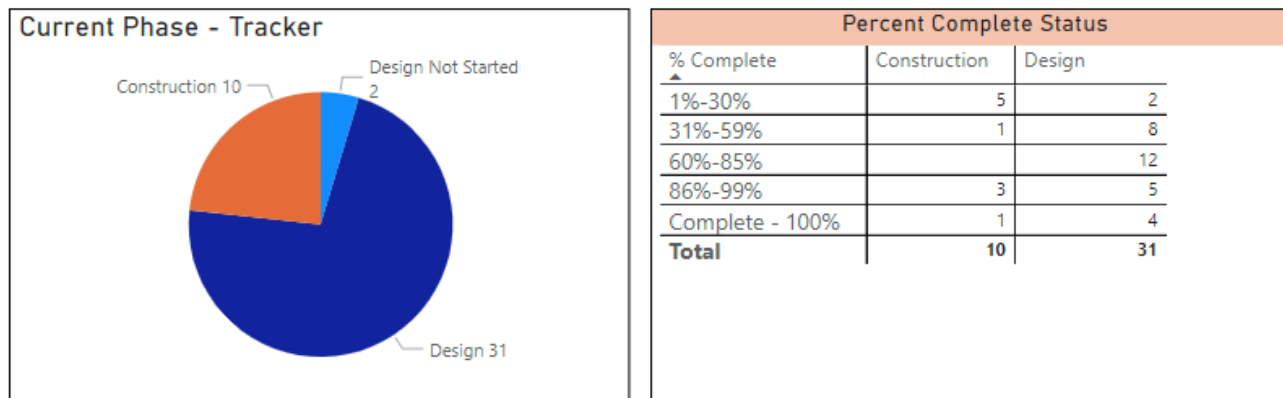


Figure 4 – Utilities Summary

6.4 THIRD PARTY AND PERMITS

No major changes this month. Table 19 outlines the summary of third party agreements categorizations.

Table 19 – Third Party Agreements Categorization

| Category | Total Executed | Forecasted for execution within the next year | Future forecasted execution | Total |
|---------------------------------------|----------------|-----------------------------------------------|-----------------------------|-----------|
| Critical for FFGA | 30 | 0 | 0 | 30 |
| Critical for post FFGA (Construction) | 0 | 0 | 5 | 5 |
| Critical for post FFGA (Operations) | 1 | 0 | 5 | 6 |
| Non-Critical Agreements | 2 | 0 | 0 | 2 |
| Total | 33 | 0 | 10 | 43 |

6.5 PMT CONTRACT SUMMARY

Table 21 shows the HNTB-WSP Contract Summary and executed Task Orders to date.

The Program Management Team supports VTA in the delivery of BSVII in the following areas:

- a. Management of Programwide functions: Safety and Security, Quality, External affairs (incl. Outreach, Third Party Coordination), BART Engagement, Requirements management, Interface Management, IT Support, Right of Way Coordination, Utility Relocation Coordination and Oversight.

- b. Program Controls Support: Program Schedule Development and Management, Program Cost Management, Risk Management, Reporting, Development/Validation of Independent Cost Estimates
- c. Management of CP2 Contract: Project Management, Contract Management and Engineering Management.
- d. Management of General engineering Consultants and Construction Management Consultants.
- e. FTA Grant Support and other as needed support.

Table 20 – Program Management Team Contract Summary

| Task Order Number | Task Order Status | Period Start and End | Authorized Task Orders/Final Commitments | Incurred to Date | Incurred / Forecast* (Per Task Order) | Incurred / Forecast* (Cumulative) | S17017 Contract Balance based on Forecast* |
|-----------------------------------|-------------------------------------|-----------------------|------------------------------------------|------------------|---------------------------------------|-----------------------------------|--------------------------------------------|
| All Costs in Millions and rounded | | | | | | | |
| S17017 Contract Value: | | \$ | 191.6 | | | | |
| Task Order 1 | Closed | Nov 2017 to Jun 2018 | \$ 18.2 | \$ 18.2 | \$ 18.2 | \$ 18.2 | \$ 173.3 |
| Task Order 2 | Closed | Jul 2018 to Jun 2019 | \$ 25.7 | \$ 25.7 | \$ 25.7 | \$ 44.0 | \$ 147.6 |
| Task Order 3 | Completed. | Jul 2019 to Oct 2020 | \$ 28.8 | \$ 28.8 | \$ 28.8 | \$ 72.8 | \$ 118.8 |
| Task Order 4 | Completed. | Nov 2020 to Aug 2021 | \$ 17.7 | \$ 17.7 | \$ 17.7 | \$ 90.4 | \$ 101.1 |
| Task Order 5 | Completed. | Aug 2021 to Jun 2022 | \$ 15.6 | \$ 15.6 | \$ 15.6 | \$ 106.0 | \$ 85.6 |
| Task Order 6 | Completed. | Jul 2022 to Feb 2023 | \$ 12.4 | \$ 12.4 | \$ 12.4 | \$ 118.4 | \$ 73.2 |
| Task Order 7 | Completed. | Feb 2023 to Jun 2023 | \$ 10.0 | \$ 10.0 | \$ 10.0 | \$ 128.3 | \$ 63.3 |
| Task Order 8* | Completed. Pending final closure | July 2023 to Dec 2023 | \$ 18.2 | \$ 18.0 | \$ 18.2 | \$ 146.5 | \$ 45.1 |
| Task Order 9 | In Progress | Jan 2024 to Oct 2024 | \$ 42.0 | \$ 21.5 | \$ 36.6 | \$ 183.1 | \$ 8.5 |
| | Remaining Contract | | | | | | \$ 8.5 |
| S17017 Contract Total: | | | \$ 188.5 | \$ 167.8 | | \$ 183.1 | \$ 8.5 |

* Forecast is projected and subject to change

6.6 GEC CONTRACT SUMMARY

Table 22 shows the MMD-PGH Wong Contract Summary and executed Task Orders to date.

Task Order 9, 10 incurred costs are reconciled. Task Order 11 was amended to extend the services through June 2024.

The GEC supports VTA in the delivery of BSVII in the following areas:

- Progression of Design development of Construction Package (CP) 1 (Systems), CP3 (Newhall Yard and Santa Clara Station) and CP4 (Underground Stations)
- Design criteria manual configuration, design integration, requirements, Cost Estimates development for CP1, CP3 and CP4.
- Design Support during Construction for all CPs.
- Other as needed support to VTA, PMT.

Table 21 – General Engineering Consultant Contract Summary

| Task Order (TO) Number | Task Order Status | Period Start and End | Authorized Not to Exceed amount (TO) | Incurred to Date | Incurred / Forecast* (Per Task Order) | Incurred / Forecast* (Cumulative) | \$18088 Contract Balance |
|--------------------------------------|-------------------------------|------------------------|--------------------------------------|------------------|---------------------------------------|-----------------------------------|--------------------------|
| \$18088 Contract Value --> | | 342.8 | | | | | |
| Task Order 1 | Closed | Apr 2019 to Jun 2019 | \$ 3.4 | \$ 3.4 | \$ 3.4 | \$ 3.4 | \$ 339.3 |
| Task Order 2 | Closed | Apr 2019 to Jan 2021 | \$ 35.9 | \$ 35.9 | \$ 35.9 | \$ 39.3 | \$ 303.4 |
| Task Order 3 | Closed | Aug 2019 to Sep 2020 | \$ 1.5 | \$ 1.5 | \$ 1.5 | \$ 40.8 | \$ 301.9 |
| Task Order 4 | Closed | Mar 2020 to Oct 2020 | \$ 20.7 | \$ 20.7 | \$ 20.7 | \$ 61.5 | \$ 281.2 |
| Task Order 5 | Closed | Nov 2020 to Aug 2021 | \$ 46.5 | \$ 46.5 | \$ 46.5 | \$ 108.1 | \$ 234.7 |
| Task Order 6 | Closed | Dec 2020 to Aug 2021 | \$ 0.6 | \$ 0.6 | \$ 0.6 | \$ 108.7 | \$ 234.1 |
| Task Order 7 | Closed | Aug 2021 to Jun 2022 | \$ 37.9 | \$ 37.9 | \$ 37.9 | \$ 146.6 | \$ 196.1 |
| Task Order 8 | Completed. Pending closure | Apr 2022 to Jun 2023 | \$ 0.9 | \$ 0.9 | \$ 0.9 | \$ 147.5 | \$ 195.2 |
| Task Order 9 | Completed. Pending closure | Jul 2022 to Dec 2022 | \$ 17.3 | \$ 17.0 | \$ 17.0 | \$ 164.5 | \$ 178.2 |
| Task Order 10 | Completed. Pending closure | Jan 2023 to Jun 2023 | \$ 32.2 | \$ 30.1 | \$ 30.1 | \$ 194.6 | \$ 148.1 |
| Task Order 11 | In Progress | Jul 2023 to Jun 2024 | \$ 90.9 | \$ 73.1 | \$ 90.9 | \$ 285.5 | \$ 57.2 |
| Task Order 12 | Completed. Pending closure | Sep 2023 to Oct 2023 | \$ 0.04 | \$ 0.04 | \$ 0.04 | \$ 285.6 | \$ 57.2 |
| | Remaining Contract Balance | March 2024 to Dec 2026 | | | TBD | TBD | \$ 57.2 |
| \$18088 Contract Total: | | | \$ 287.9 | \$ 267.8 | \$ 285.6 | \$ 285.6 | \$ 57.2 |

* Forecast is projected and subject to change.

Cost rounded to closest millions

6.7 CMS CONTRACT SUMMARY

Table 23 shows the Bechtel Contract Summary with executed Annual Work Plans to date.

Because the CM is still in the process of onboarding, the current work order is limited to mobilization. When the Annual Work Plan is awarded, the scope will be revised accordingly.

Table 22 – Construction Management Services Contract Summary

| AWP | Status | Period Start and End | Authorized Not to Exceed AWP amount | Incurred to Date | AWP Incurred / Forecast* | Incurred / Forecast* (Cumulative) | V23194 Contract Balance |
|---------------------------|-------------|----------------------|-------------------------------------|------------------|--------------------------|-----------------------------------|-------------------------|
| V23194 Contract Value --> | 490.8 | | | | | | |
| AWP 1 | In Progress | May 2024 to Jun 2024 | \$ 6.6 | \$ 0.3 | \$ 6.6 | \$ 6.6 | \$ 484.2 |

* Forecast is projected and subject to change.
Cost rounded to closest millions

APPENDIX A – MAJOR CONTRACTS SUBCONSULTANTS LIST

S17017 – HNTB+PB Joint Venture APPROVED SUBCONTRACTORS

(New subcontractors listed in Green)

| FIRM | ADDRESS | AREA OF RESPONSIBILITY | DBE |
|-------------------------------------------------|-------------------------------------------------------------------------------------------------------------------------------------------------|-------------------------------------------------------------------------------------------------------------------------------------------------|-----|
| Aldea Services* | 5940 Frederick Crossing Lane Suite 101 Frederick, MD 21704 | Underground Construction Risk. | |
| Abtahi Engineering Management Consulting | 7 El Caminito Orinda, CA, 94563-2301 Phone: (925) 525-7565 | Third Party Agreements & Permits | |
| BKF Engineers | 1730 N. First Street, Suite 600 San Jose, CA 95112 Phone: (408) 467-9140 | Utility Coordination | |
| Business Models, Inc. | 1049 Market Street #608 San Francisco, CA 94103 | Co-Innovation workshop design & facilitation | |
| Capital Project Strategies, LLC | 873 Old Holly Dr. Great Falls, VA 22066 | DB Procurement and Public Private Project Strategy | |
| Construction Engineering Consulting Group, Inc. | Mailing Address: PO Box 3279 Chico, CA 95927 Office Address: 1550 Humboldt Rd., Suite 5 Chico, CA 95928 Phone: (925) 548-7476 | Construction Contract Advisory Panel | |
| Coppersmith Consulting, Inc. | 2121 N. California Blvd., #290, Walnut Creek, CA 94596 Phone: (925) 974-3335 | Structural Geological Specialist | |
| Cordoba Corporation | 461 Second Street, Suite 454T San Francisco, CA 94107 Phone: (562) 587-1031 | Project Controls Support | X |
| David Klahr Consulting, Inc. | 7205 Galgate Dr. Springfield, VA. 22153 | Emerging transportation business case assessment, procurement methods, and adoption strategies, and monetization and value capture alternatives | |
| DEENSCORP | 2175 The Alameda, Suite 100 San Jose, CA 95126 Phone: (408) 345-3860 | Civil Engineering | X |
| DTA | 5000 Birch St., Suite 6000 Newport Beach, CA 92660 Phone: (949) 955-1500 | Financial Data | |
| Ed Cording | 119 W. Huntingdon Street Savannah, GA 31401 Phone: (217) 369-7122 | Tunneling Peer Review | |



VTA's BART SILICON VALLEY PHASE II EXTENSION PROJECT
VTA BSVII Executive Monthly Progress Report

| FIRM | ADDRESS | AREA OF RESPONSIBILITY | DBE |
|------------------------------------|------------------------------------------------------------------------------------------|----------------------------------------------------------------------------------|-----|
| Elle Consultants** | 1536 Barcelona Dr El Dorado Hills, CA 95762 | Cost Estimating Services | |
| Gall Zeidler Consultants | 1990 N. California Blvd, 8th Floor Walnut Creek, CA 94596 Phone: (646) 206-1606 | Tunneling Peer Review | |
| Gayln Rippentrop | PO Box 89321 Sioux Falls, SD 57109 | Construction Methodologies Expert Consultant, Cut & Cover Workshops | |
| GDC Constructors, Inc. | 4204 Brynwood Dr. Naples, FL 34119 Phone: (239) 289-2901 | Construction Methodologies Expert Consultant, Cut & Cover Workshops | |
| Gregg Korbin | 1167 Brown Avenue Lafayette, CA 94549 Phone: (925) 284-9017 | Tunneling Peer Review | |
| Hexagon Transportation Consultants | 100 Century Center Court, Suite 501 San Jose, CA 95112 Phone: (408) 971-6100 | Traffic Engineering | |
| Intueor Consulting, Inc. | 7700 Irvine Center Dr., Suite 470 Irvine, CA 92618 Phone: (949) 753-9011 | Project Controls Team Augmentation, Cost Control, Analysis & Scheduling Services | X |
| Jim Rollings | 2311 Greenwood Avenue Wilmette, IL Phone: (312) 953-0508 | Strategic Advisory Panel | |
| JCK Underground, Inc. | 25 Dorchester Avenue, #51549 Boston, MA, 02205 Phone: (857) 294-1317 | Strategic Advisory Panel | |
| Jensen Hughes* | 10170 Church Ranch Way, Suite 200 Westminster, CO 80021 | Accessibility Consulting Services | |
| Joe Urbas | 925 Kirby Drive Fort Mill, SC 29715 Phone: (360) 430-2393 | Fire Life Safety Expert Consultant | |
| John Gaul | 331 Isabella Ave. Staten Island, NY 10306-4555 | BART Operations Expert Consultant | |
| Josephine's Professional Staffing | 2158 Ringwood Avenue San Jose, CA 95131 Phone: (408) 943-0111 | Document Control, Administrative Support | X |
| Keish Environmental | 6768 Crosby Court San Jose, CA 95129 Phone: (408) 592-0223 | Environmental Compliance | X |
| Kimley-Horn Associates | 401 B Street #600 San Diego, CA 92101 Phone: 650237.9651 | Public Relations & Outreach | |
| KivettConsult | 5600 Wisconsin Ave. Apt 1209 Chevy Chase, MD 20815 | Station & Tunnel Ventilation Design | |
| KTW Consulting LLC | 160 Marietta Drive San Francisco, CA 94127 Phone: (510) 368-1776 | Rail Systems Consulting | |



VTA's BART SILICON VALLEY PHASE II EXTENSION PROJECT
VTA BSVII Executive Monthly Progress Report

| FIRM | ADDRESS | AREA OF RESPONSIBILITY | DBE |
|----------------------------------------|------------------------------------------------------------------------------------------------------------------|------------------------------------------------------------------------|-----|
| Lettis Consultants International, Inc. | 1981 N. Broady, Ste. 330 Walnut Creek, CA 94596 Phone: (925) 482-0360 x202 | Environmental Compliance | |
| Markus Thewes | Ruhr-University Bochum Universitaetsstr 150, IC 6-127, 44801 Bochum, Germany Phone: +49 234 32 28061 | Tunneling Peer Review | |
| Michael Glikin | 135 Ocean Parkway 2M Brooklyn, New York 11218 | BSV Ph II independent fleet and storage requirements assessment | |
| The National Constructors' Group | 635 Chaparral Circle P.O. Box 2890 Napa, CA 94558-0537 | Constructability Review, Estimate Review | |
| NorCal Geophysical Consultants, Inc. | 321 Blodgett St. Suite A Cotati, CA 94931 Phone: (707) 796-7170 | Geophysics Surveying and Testing | |
| Parikh Consultants, Inc. | 1497 N Milpitas Blvd, Milpitas, CA 95035 Phone: (408) 452-9000 | Geotechnical | X |
| Quality Engineering, Inc. | Quality Engineering, Inc. 1281 30th Street, Suite 100 Oakland, CA 94608 Phone: (510) 377-6050 | Project Quality Consulting & Services | X |
| RailPros, Inc. | 15265 Alton Pkwy, Suite 140 Irvine, CA 95618 | Represent VTA's Interests in meetings with Union Pacific | |
| RHA, LLC | 6677 West Thunderbird Suite K183 Glendale, AZ 85306 | Facilitation of Value Engineering Methodologies | X |
| Richard A. Sage, LLC | 18624 116th Street, SE Snohomish, WA 98290 Phone: (425) 530-7823 | Construction Methodologies Expert Consultant, Cut & Cover Workshops | |
| Richard F. Clarke | 9391 Painted Canyon Circle Littleton, CO 80129 Phone: (303) 653-2475 | Independent Peer Review Panel Member | |
| Singer Associates, Inc. | 47 Kearny Street, 2nd Floor San Francisco, CA 94108 Phone: (415) 227-9700 | Public Relations & Outreach | |
| Sunrise Pacific | 460 Center Street, Suite 6168 Moraga, CA 94570 Phone: (925) 247-4266 | Controls Support | X |
| TechTU Business Solutions, Inc. | 4900 Hopyard Road, Suite #100 Pleasanton, CA 94588 Phone: (925) 468-4174 | Document Control, Administrative Support | X |
| Transportation Technology Center, Inc. | 55500 DOT Road Pueblo, CO 81001 Phone: (719) 585-1811 | BART Infrastructure, practices and operations | |
| Underground Command & Safety, LLC | 23415 67 Lane SW Vashon, WA 98070 Phone: (206) 940-9177 | Fire Load & Incident Response Expert Consultant | |



| FIRM | ADDRESS | AREA OF RESPONSIBILITY | DBE |
|-------|-------------------------------------------------------------------------------------|--------------------------|-----|
| WRECO | 1243 Alpine Road, Suite 108 Walnut Creek, CA 94596 Phone: (925) 941-0017 X201 | Hydraulics and Hydrology | X |

* Effective Date November 1, 2023

** Effective Date August 1, 2023.

CONTRACT S18088 – MMW Joint Venture
APPROVED MMW SUBCONTRACTORS

| Firm Name | Address | DBE or SBE Certification | Discipline |
|----------------------------------------|-------------------------------------------------------------|--------------------------|--------------------------------|
| 3Vi, Inc. | 2603 Camino Ramon, Suite 200 San Ramon, CA 94583 | DBE/SBE | Electrical Engineering |
| Alliance Engineering Consultants, Inc. | 4701 Patrick Henry Drive, Bldg. 10 Santa Clara, CA 95054 | DBE/SBE | Electrical Engineering |
| Anil Verma Associates, Inc. | 1970 Broadway, Ste #668 Oakland, CA 94612 | DBE/SBE | Architectural Design |
| Acoustic Strategies, Inc. (ATS) | 215 N. Marengo Ave., Ste# 100 Pasadena, CA 91101 | SBE Only | Noise/Vibration |
| BA Inc. | 555 W 5th St. Suite 35th floor Los Angeles, CA 90013 | DBE/SBE | General Engineering Resource |
| Bennett Engineering Services | 1082 Sunrise Avenue, Suite 100 Roseville, CA 95661 | DBE/SBE | Traffic Engineering |
| Biggs Cardosa Associates | 865 The Alameda San Jose, CA 95126 | None | Structural Engineering |
| CPM Associates, Inc. | 65 McCoppin Street San Francisco, CA 94103 | SBE Only | Project Controls |
| Corrpro Companies, Inc. | 20991 Cabot Blvd Hayward, CA 94544 | None | Corrosion Engineering Services |
| Fehr & Peers | 160 W. Santa Clara Street, Ste #675 San Jose, CA 95113 | None | Station Circulation and CTMP |
| FMG Architects | 330 15 th Street Oakland, CA 94612 | DBE/SBE | Architectural Design |

| Firm Name | Address | DBE or SBE Certification | Discipline |
|-----------------------------------------|-----------------------------------------------------------|---------------------------------|-------------------------------------------------|
| Foster + Partners | 1000 Sansome Street, Ste #240 San Francisco, CA 94111 | None | Architectural Design |
| GeoPentech, Inc | 101 Academy, Ste # 100 Irvine, CA 92617 | SBE Only | Geotechnical Engineering |
| Gregg Drilling, LLC | 950 Howe Road Martinez, CA 94553 | None | Geotechnical Exploratory Drilling |
| HMH Engineers | 1570 Oakland Road San Jose, CA 95131 | SBE Only | Survey Utilities |
| JCL Consulting Group | 93 Wapello Street Altadena, CA 91001 | DBE/SBE | Community/Business Outreach Specialist |
| Josephine's Professional Staffing, Inc. | 2158 Ringwood Avenue San Jose, CA 95131 | DBE/SBE | Administrative/ Project Management Augmentation |
| Krebs Corporation | 1840 Sun Peak Dr., Suite B-102 Park City, UT 84098 | None | Estimating |
| Lamoreaux Associates, Inc. | 2686 North 775 West Cedar City, UT 84721 | SBE Only | Systems Design |
| Lerch Bates, Inc. | 9780 S. Meridian Blvd Suite 450 Englewood, CO 80112 | None | Vertical Transport Consultant |
| Merrill Morris Partners | 249 Front Street San Francisco, CA 94111 | DBE/SBE | Landscape Architect |
| MxV Rail | 350 Keeler Parkway Pueblo, CO 81001 | None | Trackwork Design Advisor |
| NORCAL Geophysical Consultants, Inc. | 321A Blodgett Street Cotati, CA 94931 | None | Geotechnical/Geophysical Logging Survey |
| Parikh Consultants, Inc | 2360 Qume Drive, Suite A San Jose, CA 95131 | DBE/SBE | Geotechnical Services |
| Pitcher Services, LLC | 218 Demeter Street East Palo Alto, CA 94303 | None | Geotechnical Exploratory Drilling (Contractor) |
| Robin Chiang & Company | 381 Tehama Street San Francisco, CA 94103 | DBE/SBE | Architectural Design |



| Firm Name | Address | DBE or SBE Certification | Discipline |
|------------------------------------------|------------------------------------------------------------------------|---------------------------------|---------------------------------------------------|
| Ross Infrastructure Development | 555 4th St. Ste #927 San Francisco, CA 94107 | None | TOJD Project Elements |
| Schaaf & Wheeler | 4699 Old Ironsides Rd. , Ste. 350, Santa Clara, CA 95054 | SBE | Hydrology Services |
| SOHA Engineers | 48 Colin P. Kelly Jr. Street San Francisco, CA 94107 | DBE/SBE | Structural Engineering |
| STV Incorporated | 505 14 th Street, Suite 1060 Oakland, CA 94612 | None | A/E design services – NMF, Santa Clara Station |
| Sunrise Pacific, Inc. | PO BOX 6168 Moraga CA 94556 | DBE/SBE | General Engineering Services |
| TEC-Cuatro S.A. | Lepant, 350, 3 ^o , 08025 Barcelona, Spain | None | Technical Advisor |
| Virtual Engineering & Construction (VEC) | 388 Market St. Suite 1300 San Francisco, CA 94110 | SBE | BIM/Digital Delivery Support |
| VSCE, Inc. | 1610 Harrison Street, Suite E West Oakland, CA 94612 | DBE/SBE | General Engineering Services |
| Walker Consultants | 601 California Street, Suite 820 San Francisco, CA 94108 | None | PE/Design for Parking Garages |
| Wilson Ihrig | 6001 Shellmound Street Suite 400 Emeryville, CA 94608 | SBE | Acoustics, Noise and Vibration |
| WriteRight Technical Communications | 3511 West 10th Avenue, Vancouver, British Columbia, Canada, V6R 2E9 | None | Technical Writing/Specifications |
| YEI Engineers, Inc. | 7677 Oakport Street, Suite 200 Oakland, CA 94621 | DBE/SBE | M&P Engineering Services |
| Dr. Youssef Hashash | 1803 Golfview Drive Urbana, Illinois 61801 | None | Geotechnical Advisor |
| Budlong Inc. | 44853 Fremont Blvd. Fremont, CA 94538 | DBE | M&P Engineering Services |



CONTRACT S23174 Construction Management Services – Bechtel Infrastructure Corporation
List of SUBCONTRACTORS

| Firm Name and Location | Area of expertise | DBE |
|------------------------------------------------------------------------------------------------------------|---------------------------------------------------------------------------------------------------------|------------|
| Bechtel Infrastructure Corporation 707 Wilshire Blvd., Suite 3088 Los Angeles, CA 90017 | Program Management, Construction Management | |
| Sener Engineering and Systems Inc. 800 Wilshire Blvd., Suite 700 Los Angeles CA 90017 | Inspection, Systems Constructability, TBM and Large Bore Tunnel specialist | |
| The Allen Group, LLC 50 Osgood Place, Suite 320 San Francisco, CA 94133 | DBE/Workforce Development, Utilities Coordination, Community Outreach, Project Administration | |
| The Kleinfelder Group, Inc 25 Metro Drive Suite 110 San Jose, CA 95110 | Claims, Geotechnical Site & Instrumentation, Materials Testing & Inspection, Specialty Track Inspection | |
| Mueser Rutledge Consulting Engineers 14 Penn Plaza, 225 W 34 th St New York, NY 10122 | Ground Settlement & Compensation Grouting, Ground Freezing | |
| Montez Group 249 Onondaga Age San Francisco, CA 94112 | Quality Assurance/Quality Control, Scheduling, Document Control | Yes |
| Conerstone Concilium 241 Fifth Street San Francisco, CA 94103 | Tunnel Inspection | Yes |
| Dabri, Inc 850 S Van Ness Ave San Francisco, CA 94110 | Electrical Inspection, Environmental Compliance | Yes |
| Acumen Building Enterprises, Inc. 7770 Pardee Lane, Suite 200 Oakland, CA 94621 | Survey Coordination, Labor Compliance | Yes |
| Josephine's Professional Staffing, Inc. 2158 Ringwood Ave San Jose, CA 95131 | Requirements Administration, Project Administration | Yes |
| Safework CM 800 Wilshire Blvd, Suite 1525 Los Angeles, CA 90017 | Tunnel Safety | Yes |
| Morgner Technology Management 1880 Century Park East, Suite 1402 Los Angeles, CA 90067 | Environmental Compliance, Tunnel Inspection | Yes |
| Saylor Consulting Group, Inc. 505 Montgomery Street, 11 th Floor. San Francisco, CA 94111 | Project Controls | Yes |



| | | |
|----------------------------------------------------------------------------------|------------------------|------------|
| Pro-Tec Safety Consultants, Inc. 249 Onondaga Ave San Francisco, CA 94112 | Construction Safety | Yes |
| Elle Consultants 1536 Barcelona Drive, Suite 100 El Dorado Hills, CA 95762 | Project Controls | Yes |
| 360 Total Concepts 7677 Oakport Street, Suite 230 Oakland, CA 96621 | Third-Party Agreements | Yes |

Contract V20210

VTA's BART Silicon Valley Phase II Extension: Contract Package 2 – Tunnel and Trackwork

KST Joint Venture

List of Prime Contractors and Key Subcontractors

Prime Contractors:

| FIRM | ADDRESS | AREA OF RESPONSIBILITY |
|--------------------------------|-------------------------------------------------|------------------------|
| Kiewit Infrastructure West Co. | 4650 Business Center Drive, Fairfield, CA 94534 | Design-Builder |
| J.F. Shea Construction, Inc. | 667 Brea Canyon Rd, Suite 30, Walnut, CA 92789 | Design Builder |
| Traylor Bros., Inc.. | 835 N. Congress Ave., Evansville, IN 47715 | Design Builder |

Construction Subcontractors:

| FIRM | AREA OF RESPONSIBILITY |
|-------------------------------------------|------------------------------------------------------------------------------------------------------------------------------------------------------------------------------------------------------------------------------------------------------------------------------------------------------------------------------------------------------------------------------------------------|
| Malcolm Drilling Company, Inc. | Slurry Walls West Portal (Partial) West Retaining Cut - Stockton Avenue Mid Tunnel Facility (Partial) |
| Keller North America, Inc. | Ground Improvement Downtown San Jose Station Headhouse (Partial) Downtown San Jose Station – 2nd Entrance (Partial) Downtown San Jose Station – East Vent & Egress (Partial) Diridon Station Headhouse (Partial) White Street Egress Structure (Partial) Autumn Street Egress Structure (Partial) |
| Kiewit Foundations Co. | Foundations West Portal (Partial) West Retaining Cut- Stockton Avenue Mid Tunnel Facility (Partial) Downtown San Jose Station Headhouse (Partial) Downtown San Jose Station – 2nd Entrance (Partial) Downtown San Jose Station – East Vent & Egress (Partial) Diridon Station Headhouse (Partial) White Street Egress Structure (Partial) Autumn Street Egress Structure (Partial) |
| Cupertino Electric, Inc. | Temporary Electrical Services Electrical Design Services Permanent Electrical Work |
| Mass. Electric Construction Company | Temporary Electrical Services Electrical Design Services Permanent Electrical Work |
| Herrenknecht Tunnelling Systems USA, Inc. | EWP 9 |
| Team North Construction Services | EWP 3A Street Sweeper |
| Morgner Technology Management | EWP 7A Instrumentation & Monitoring |
| A1 Trucking SVS Inc | EWP 3A Water Truck and Offhaul Trucking |
| Discount Waste Inc | EWP 3A General Waste Disposal |
| Onsite Health & Safety | EWP 3A Onsite Nurse/EMT |
| Construction Testing Services Inc | EWP 3A Quality Control |

| FIRM | AREA OF RESPONSIBILITY |
|-----------------------------------|----------------------------------------|
| I Cerberus Security & Patrol | EWP 3A Security Guard |
| Golden Bay Fence Plus Iron Works | EWP 3A Temporary Fencing |
| Kroner Environmental Services Inc | EWP 3A Noise & Vibration Monitoring |
| RailPros Field Services Inc | EWP 3A/7A Railroad Flaggers |
| Earth Safety Dynamics Inc | EWP 3A CIH & Air Monitoring |
| Service Connected Inc. | EWP 3A Portable Toilets |
| DirtMarket LLC | EWP 3A Offhaul Trucking and Aggregates |
| Vulcan Industries, Inc. | EWP 3A Aggregates |
| National Railroad Safety Services | EWP 3A/7A Railroad Flaggers |
| Granite Rock Company | EWP 3A AC Paving and Lime Treatment |
| Sixense Inc | EWP 7A Satellite Ground Motion |
| Giron Construction | EWP 3A Structural Fill |
| St Francis Electric | EWP 3A Power Pole Demo |
| Hammer Head Protection Inc | DLTR Security Guards |
| Behrens & Associates Inc | EWP 3C Sound Wall |
| Towill, Inc. | Survey |

Design Subcontractors:

| FIRM | AREA OF RESPONSIBILITY |
|-----------------------------------|---------------------------------------------------|
| Kiewit Infrastructure Engineering | Design Management and Discipline Engineering |
| ARUP | Tunnel and Underground Design including EWP 1 & 2 |
| Shannon Wilson | Geotechnical |
| JMA Civil, Inc | EWP 3 |
| RSE Corporation | EWP 5 |
| Viatechnik LLC | BIM/CAD Support |
| Brierley Associates Corporation | Support of Excavation |
| Bender Consulting LLC | Dewatering |
| Ground Control Inc | Building Demolition Support |
| Dr Sauer & Partners Corp | Geotechnical Engineering – Peer Review |
| HB+Assoc. Architects, Inc. | Architecture |
| Telamon Engineering Consultants | Utilities Relocation Engineering / Support |

| FIRM | AREA OF RESPONSIBILITY |
|-------------------------------|----------------------------------------|
| OLMM Consulting Engineers | Structures Engineering |
| PB&A Inc | Geotechnical Engineering – Peer Review |
| M-P Consultants, PC | Interface Staff Augmentation |
| Ground Rules Engineering Inc. | GBR Review |
| DC Engineering Group | Traffic Control Planning (MOT) |
| NBA Engineering, Inc. | MEP Design |
| WaterVation, PLLC | Drainage Design Support |
| Structus Inc | Structural Engineering |