

# VTA's BART Silicon Valley Phase II Extension Project

Santa Clara November  
Community Working Group Meeting

November 14th, 2024



# Agenda

- Welcome & Introduction
- Phase II Update
- Approved Cost Saving Concepts to be Advanced
- CWG Meeting Format
- Construction Update
- BSVII Year in Review
- CWG Member Report Out
- Next Steps

# CWG Icebreaker



You only get to choose **three**...which will it be?



# Santa Clara CWG Members



- Alden Smith, Holland Partner Group
- **Ana Vargas-Smith**, *Reclaiming Our Downtown*
- Sean Collins, *Santa Clara University*
- Bella Burleigh, *SCU Service & Social Justice (SCCAP)*
- Jack Morash, *South Bay Historic Railroad Society*
- John Urban, *Newhall Neighborhood Association*
- Jonathon Evans, *Old Quad Residents Association*
- Ron Miller, *Bellarmino College Preparatory*
- Ryan Morfin, *San José Earthquakes*
- Todd Trekell, *Hunter Partners*
- *Vacant*, *Silicon Valley Central Chamber of Commerce*



# Upcoming Meetings



- Upcoming CWG Dates
  - Santa Clara CWG Meeting: February 13, 2025
- VTA Board of Directors [vta.org/about/board-and-committees](https://vta.org/about/board-and-committees)
  - Board of Directors' Meeting: December 5, 2024, 5:30 PM
  - VTA's BSVII Oversight Committee: December 12, 2024, 12:00 PM
  - Board of Directors' Meeting: January 9, 2025, 5:30 PM
  - VTA's BSVII Oversight Committee: January 16, 2025, 12:00 PM
  - Board of Directors' Meeting: February 6, 2025, 5:30 PM
- Community Meeting
  - December 2, 2024, 6:00 PM (Virtual)
  - December 4, 2024, 6:00 PM (In-Person, San Jose Chamber of Commerce)
- Ngan will email alerts for other meetings

# Meeting Objectives



- Provide BSVII Project updates and lookaheads to 2025
- Clarify structure of different types of Community Working Group meetings moving forward
- Provide an opportunity for Community Working Group feedback



# Phase II Update

Bernice Alaniz, VTA

# VTA BSVII Project Staff



**Bernice Alaniz**  
VTA BSV Director of  
External Affairs



**Erica Roecks**  
VTA BSV Deputy  
Director External  
Affairs



**Brent Pearse**  
VTA BSV External Affairs  
Planning & Engagement  
Manager



**Matt Derby**  
BSV External Affairs  
Outreach Lead



**Clarence Eng**  
BSV External Affairs  
Stakeholder & Santa  
Clara Stakeholder  
Lead



**Ngan Nguyen**  
BSV External Affairs  
28th Street/Little Portugal  
Stakeholder Lead



**Adriano Rothschild**  
BSV External Affairs  
Downtown Stakeholder  
Lead



**Erin Sheelen**  
BSV External Affairs  
Diridon Stakeholder  
Lead



**Tiffany Nguyen**  
BSV External Affairs  
Digital  
Communications



**Angela Chan**  
BSV External Affairs  
Community Outreach



**Kristen Mei**  
BSV External Affairs  
CWG & DRC  
Coordinator



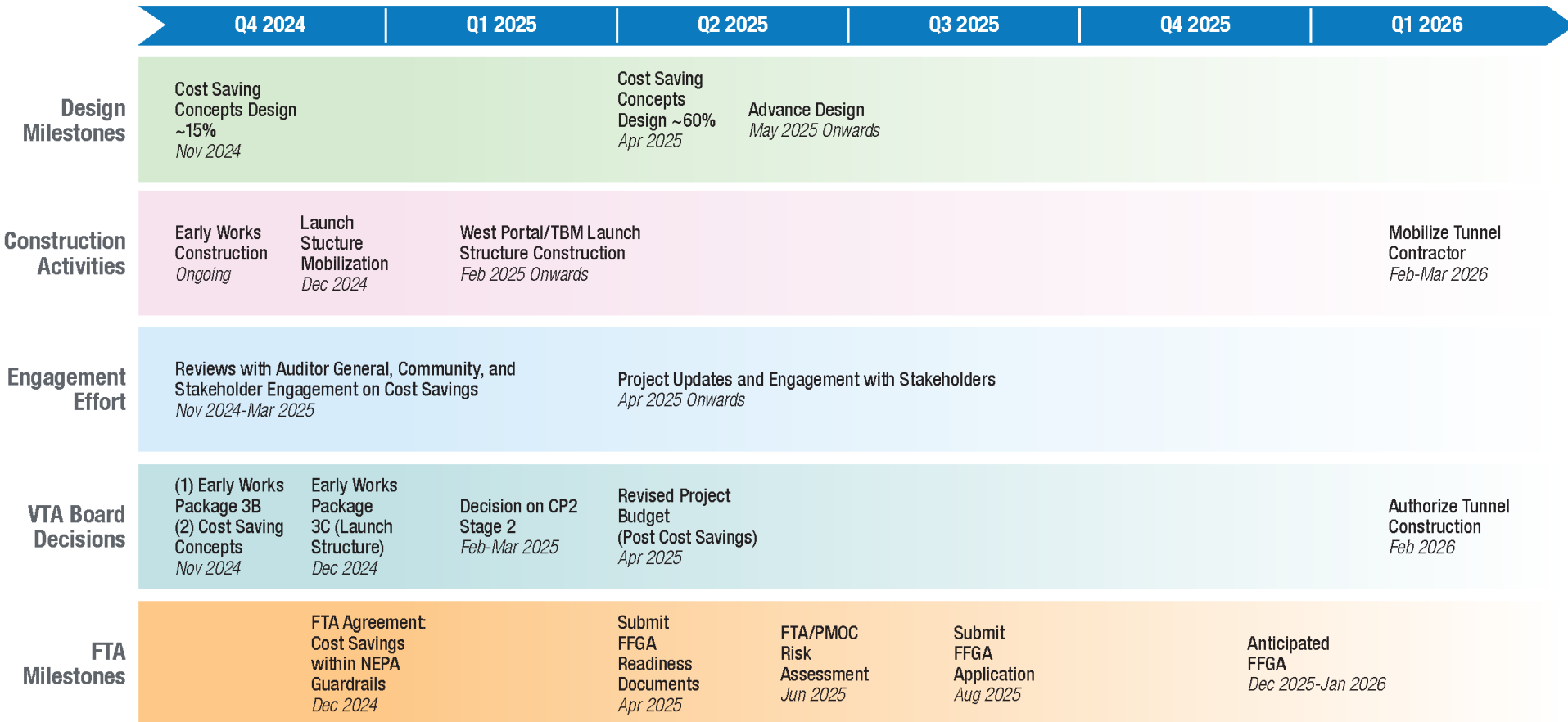
**Monica Tanner**  
BSV External Affairs  
Advocacy Program





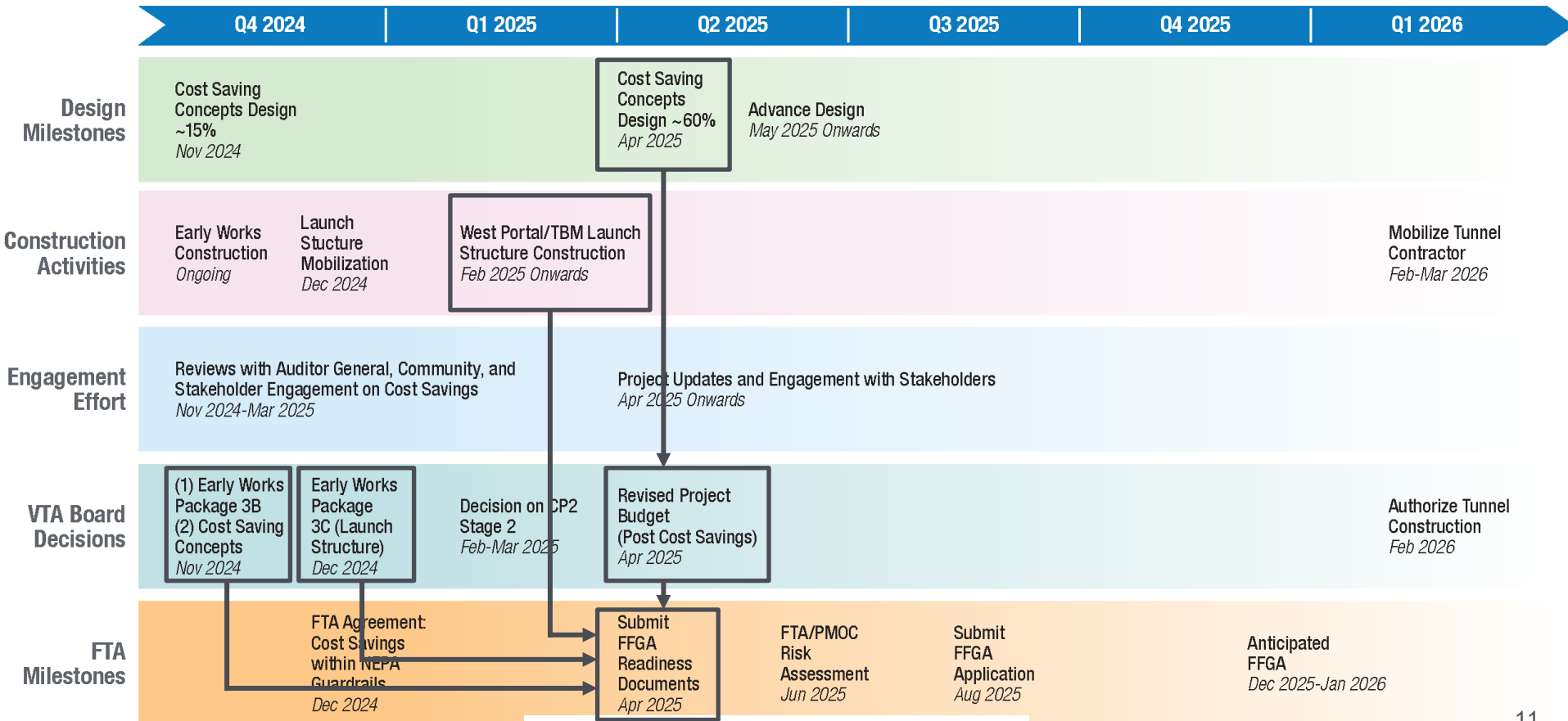
- Regular progress and risk review meetings with FTA/PMOC in anticipation for FFGA
- Over-the-shoulder reviews of documents
- Congressional Delegation Briefings held in DC late September
- Met with senior staff from FTA Headquarters and Region IX to discuss FFGA timeline and ongoing cost savings effort

# Path to FTA Full Funding Grant Agreement (FFGA)

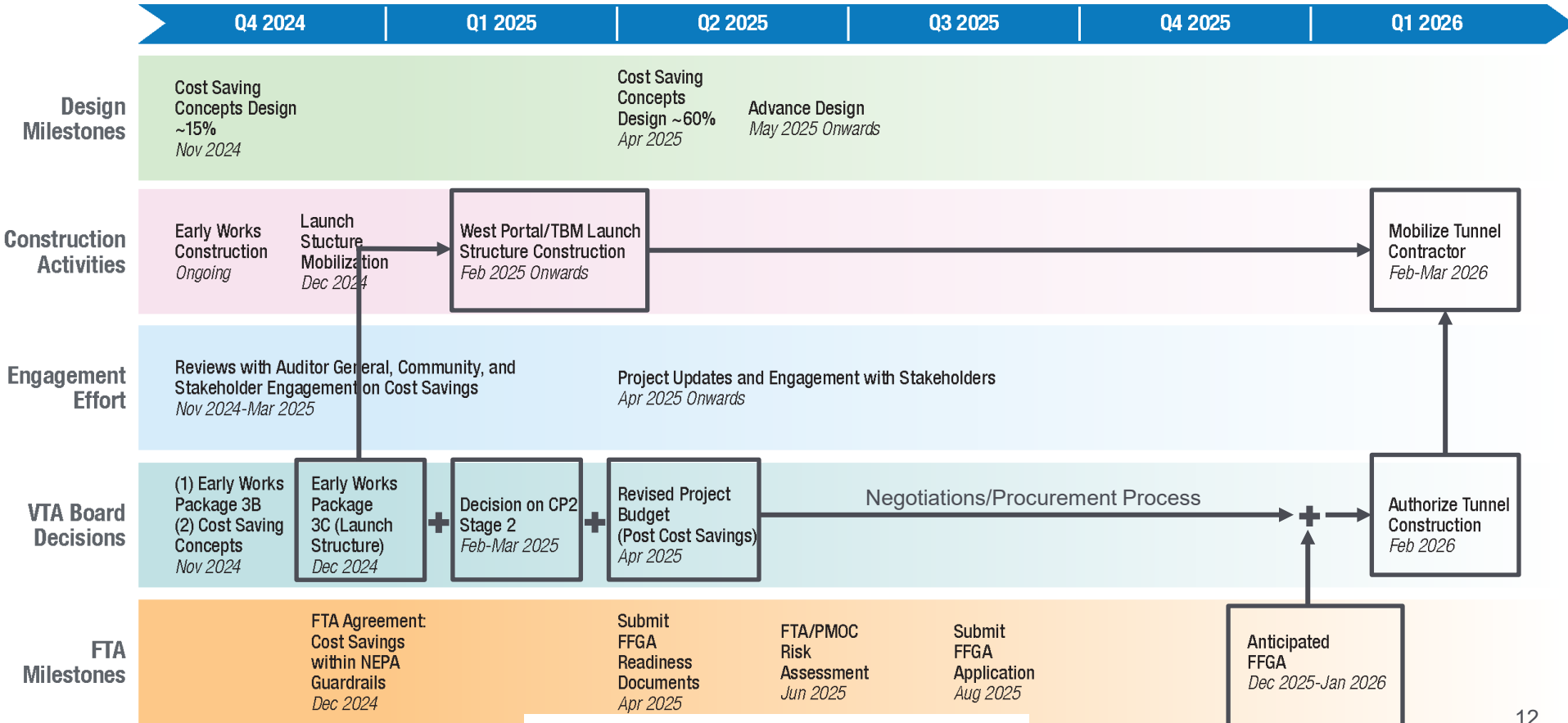


Subject to change pending further review with FTA

# Critical Activities to FFGA Readiness Submittal



# Critical Activities to Tunnel Construction







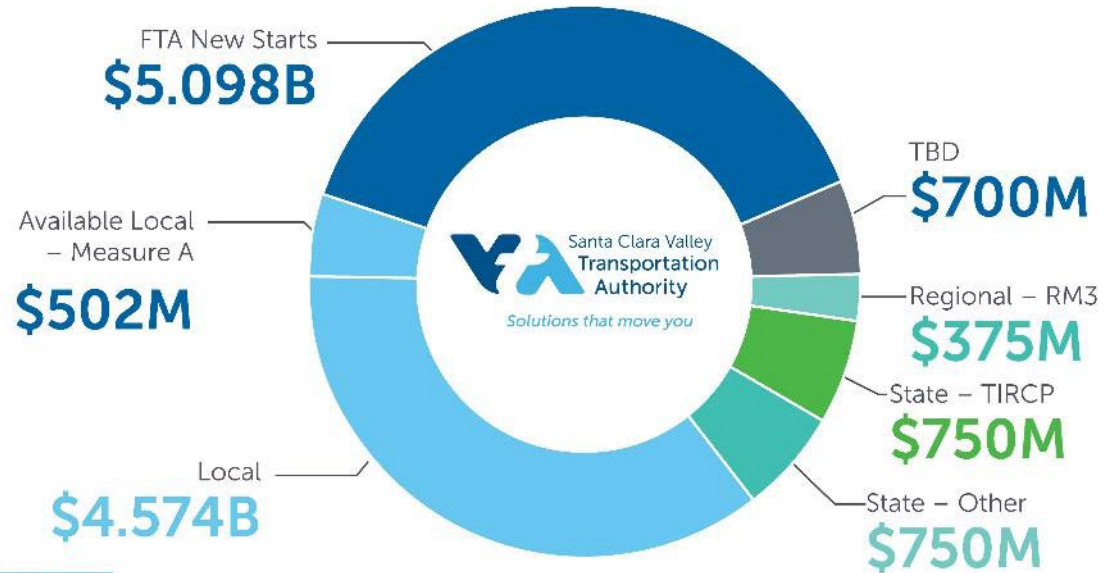
## August 2025 FFGA Submittal

- Engage with stakeholders and community to continue to build consensus
- Advance design of Cost Savings Concepts
- Address risk and contingency items
- Allows for an informed decision on CP2 Stage 2 in Spring 2025
- Secure additional grants and state funding
- Revise project budget and financial plan (post Cost Savings)
- Allows authorization of tunnel construction after FFGA is secured

# Progress on Addressing the Funding Gap



- Refining Cost Savings
- Exploring non-local funding options for **up to \$100M**:
  - Solutions for Congested Corridors Program (SCCP)
  - SB1 Local Assistance Program



Note: Subject to change pending further analysis.

# Next Steps



	Q4 2024	Q1 2025	Q2 2025	
<b>Design Milestones</b>	Cost Saving Concepts Design ~15% <i>Nov 2024</i>		Cost Saving Concepts Design ~60% <i>Apr 2025</i>	
<b>Construction Activities</b>	Early Works Construction <i>Ongoing</i>	Launch Structure Mobilization <i>Dec 2024</i>	West Portal/TBM Launch Structure Construction <i>Feb 2025 Onwards</i>	
<b>Engagement Effort</b>				
<b>VTA Board Decisions</b>	(1) Early Works Package 3B (2) Cost Saving Concepts <i>Nov 2024</i>	Early Works Package 3C (Launch Structure) <i>Dec 2024</i>	Decision on CP2 Stage 2 <i>Feb-Mar 2025</i>	Revised Project Budget (Post Cost Savings) <i>Apr 2025</i>
<b>FTA Milestones</b>	FTA Agreement: Cost Savings within NEPA Guardrails <i>Dec 2024</i>		Submit FFGA Readiness Documents <i>Apr 2025</i>	

- November Community Working Group (CWG) Meeting Series
- Early December FTA/PMOC Workshop
- December Community Meetings
- December Board Update
- 2025 Q1 & Q2 CWG Meeting Series
- Ongoing coordination with Stakeholders, BART, and Auditor General
- Ongoing updates at BSVII Oversight Committee



# Approved Cost Saving Concepts to be Advanced

Erica Roecks, VTA



# Cost Saving Concepts



**Tunnel Interior  
Reconfiguration**

**Newhall Yard  
Reconfiguration**

**Refine Station Design**

**Concurrent Tunneling  
from the East**

**Conversion of Parking  
Structure Spaces to  
Surface (28th St/LP)**

# Cost Saving Concepts



## Tunnel Interior Reconfiguration

Analyzing efficient internal tunnel structures with simplified design and construction methodology

## Concurrent Tunneling from the East

Studying concurrent tunneling from the East



# Cost Saving Concepts



## Newhall Yard Reconfiguration

Evaluating options regarding vehicle storage capacity, maintenance areas, shops buildings, and ancillary facilities in coordination with BART

# Cost Saving Concepts



## Refine Station Design

## Conversion of Parking Structure Spaces to Surface (28th St/LP)

- Refine station design to reflect community vision and input from Board and Community Working Groups
- Optimize station facilities while maintaining passenger experience



# Cost Savings Candidates Evaluation Criteria: Station Configurations



Evaluation Criteria	Description	Indicators
Cost Savings	<ul style="list-style-type: none"> <li>Draft ROM costs in Year of Expenditure (YOE) dollars and subject change.                             <ul style="list-style-type: none"> <li>ROM costs reflect preliminary estimates based on conceptual design alternatives.</li> </ul> </li> </ul>	\$XM - \$XXM
Operations & Maintenance (O&M)	<ul style="list-style-type: none"> <li>Anticipated reduction in annual O&amp;M costs.</li> </ul>	+ Positive change = No change - Negative change  N/A Not applicable for option
Access & Orientation	<ul style="list-style-type: none"> <li>Location of station entrance.</li> <li>Location of faregates.</li> </ul>	
Transit-Oriented Development (TOD) Opportunity & Placemaking	<ul style="list-style-type: none"> <li>Effect to future TOD opportunity.</li> <li>Effect to placemaking elements (e.g., paseo, rooftop garden).</li> </ul>	
Station Presence	<ul style="list-style-type: none"> <li>Scale and size of station entrance building.</li> </ul>	
Passenger Experience	<ul style="list-style-type: none"> <li>Passenger travel to/from faregates and platform (e.g., elevators, escalators).</li> <li>Aesthetic materials and finishes.</li> </ul>	
Sustainable Design	<ul style="list-style-type: none"> <li>Supports VTA sustainability goals.</li> </ul>	

# Santa Clara: Refine Station Design



## Overview:

- Slightly reduce size of station entrance roof (~25% square footage)
- Maintain Orchard Pavilion Concept per Design Review Committee feedback
- Implement station roof structural efficiency
- Utilize more cost-effective station materials including garage façade

## Initial Assessment:



O&M



Access & Orientation



TOD  
Opportunity & Placemaking



Station Presence



Passenger Experience



Sustainable Design

+

=

=

-

=

=



*Concept Only – Subject to Change.*

Brokaw Road & Champions Way View



# Santa Clara: Refine Station Design



*Concept Only – Subject to Change.*

Brokaw Road & Champions Way View

CURRENT as of 11/14/24 – FOR DISCUSSION ONLY

# Diridon: Refine Station Design



## Overview:

- Utilize more cost-effective station materials
- Maintain prominent roof design with simplified rectangular structure
- Optimize use of space for Stations Infrastructure Facilities
- Provide future TOD opportunity fronting Post Street

## Initial Assessment:



O&M



Access & Orientation



TOD  
Opportunity & Placemaking



Station Presence



Passenger Experience



Sustainable Design

+

=

-

=

=

=

*Concept Only – Subject to Change.*



Santa Clara Street View



# Diridon: Refine Station Design



*Concept Only – Subject to Change.*



Santa Clara & Cahill View  
CURRENT as of 11/14/24 – FOR DISCUSSION ONLY

# Downtown: Refine Station Design



## Overview:

- Utilize more cost-effective station materials
- Maintain iconic station presence & develop prominent roof design with a simple structure
- Maximize efficiency of Stations Infrastructure Facilities layout in station building and in Plaza to the north
- Emphasize Santa Clara Street entrance gateway and façade treatment; Refine northern façade treatment facing Plaza

## Initial Assessment:



O&M



Access & Orientation



TOD  
Opportunity & Placemaking



Station Presence



Passenger Experience



Sustainable Design

+

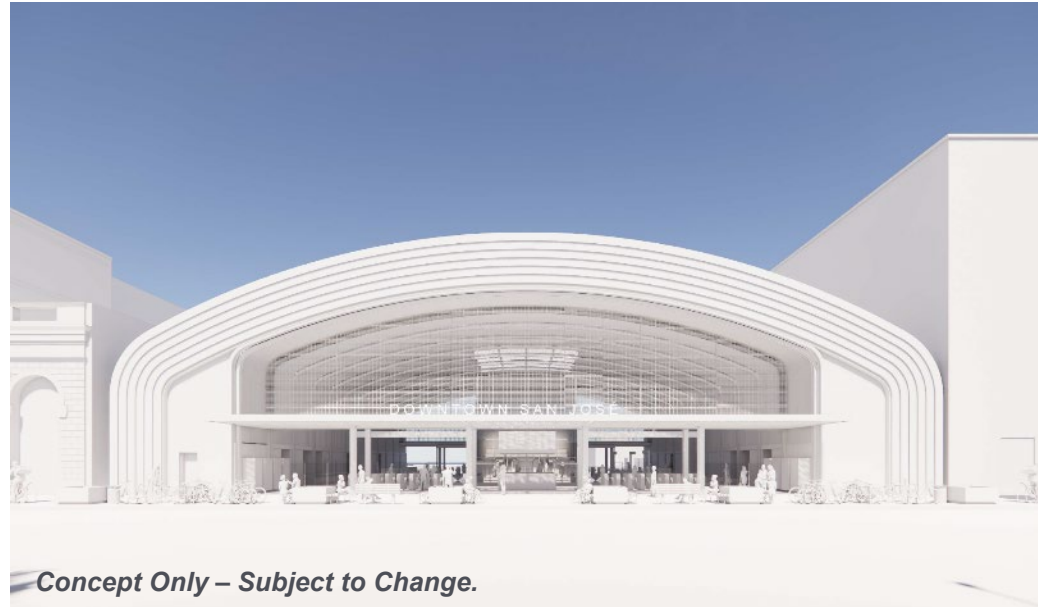
=

=

=

=

=



*Concept Only – Subject to Change.*

Santa Clara Street View

# Downtown: Refine Station Design



*Concept Only – Subject to Change.*

CURRENT as of 11/14/24 – FOR DISCUSSION ONLY

# 28th St/LP: Convert to Surface Parking



## Overview:

- Replace parking garage with surface parking lots for opening day condition
- Integrate surface parking into future Transit-Oriented Development (TOD) to maintain required parking spaces for BART patrons
- Maintain future Five Wounds Trail along 28th Street

## Initial Assessment:



O&M



Access & Orientation



TOD Opportunity & Placemaking



Station Presence



Passenger Experience



Sustainable Design

+

=

=

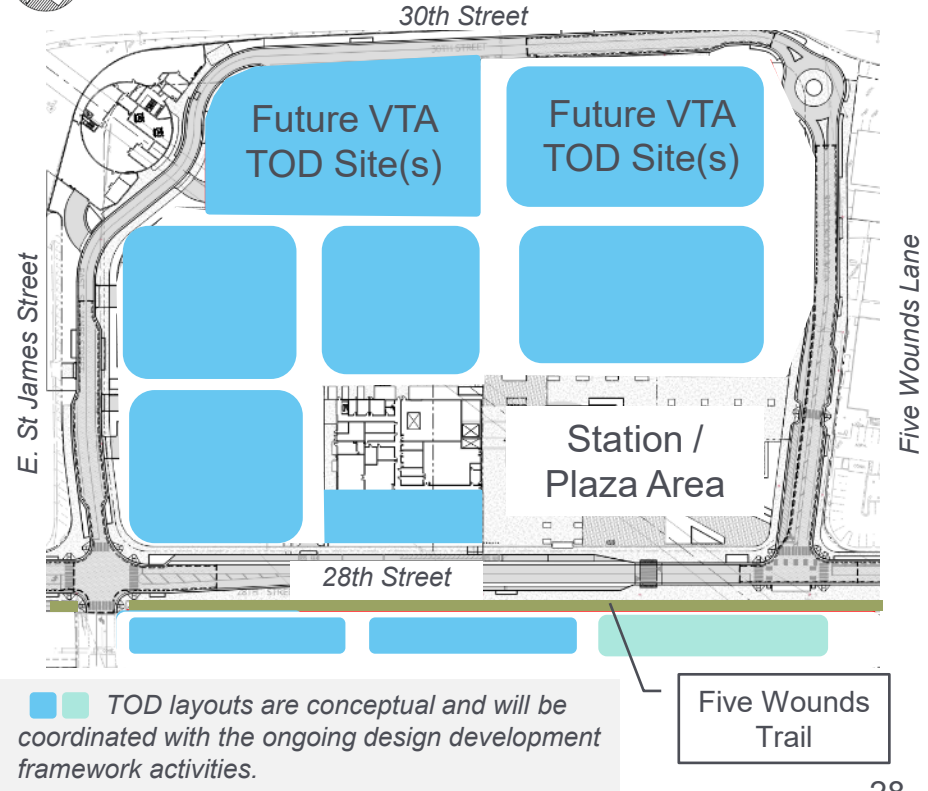
N/A

=

+



Opening Day Surface Parking Lots  
Prior to Future TOD





# 28th St/LP: Refine Station Design



## Overview:

- Utilize more cost-effective station materials
- Provide efficient circular roof structure and refine layout of entrances
- Optimize use of space for Stations Infrastructure Facilities (SIF)
- Optimize SIF elements at the North Vent Shaft and the SIF building adjacent to station
- Provide future TOD opportunity fronting 28th Street

## Initial Assessment:



O&M



Access &  
Orientation



TOD  
Opportunity &  
Placemaking



Station  
Presence



Passenger  
Experience



Sustainable  
Design

+

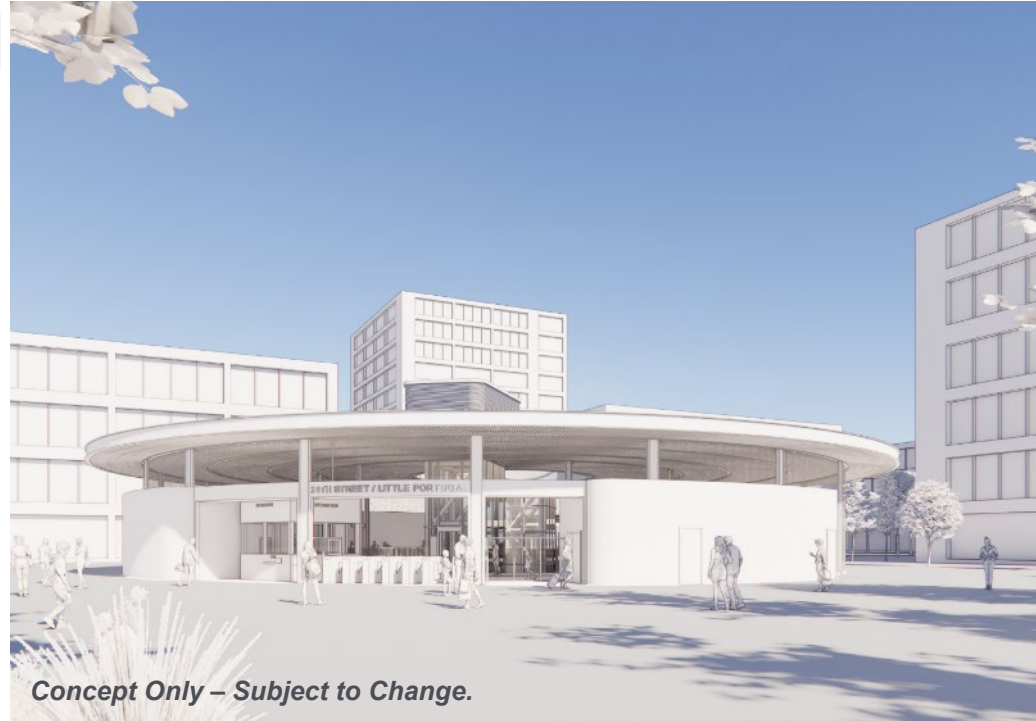
=

+

=

=

=



*Concept Only – Subject to Change.*

Main/Southern Entrance View

# 28th St/LP: Refine Station Design



Station Infrastructure  
Facilities



*Concept Only – Subject to Change.*

Northern Entrance View

CURRENT as of 11/14/24 – FOR DISCUSSION ONLY



# CWG Meeting Format

Bernice Alaniz, VTA

# 2025 CWG Meeting Structure



- Continue to hold regularly scheduled **quarterly CWG Meetings**
  - February, May, September & November
  - Maintain **hybrid format** for these regularly scheduled meetings
  - Hold three separate meetings per CWG meeting series



# CWG Feedback for BOD Meetings



- To be held on an **as-needed basis**
- **Preview to VTA BOD and Oversight Meeting** content where applicable
- To be scheduled as the VTA BSVII Project team gets confirmation on Board meeting dates
- Gather CWG Member feedback to report back to the VTA BOD
- **Virtual & combined** meeting format





# Open Discussion





# Construction Update

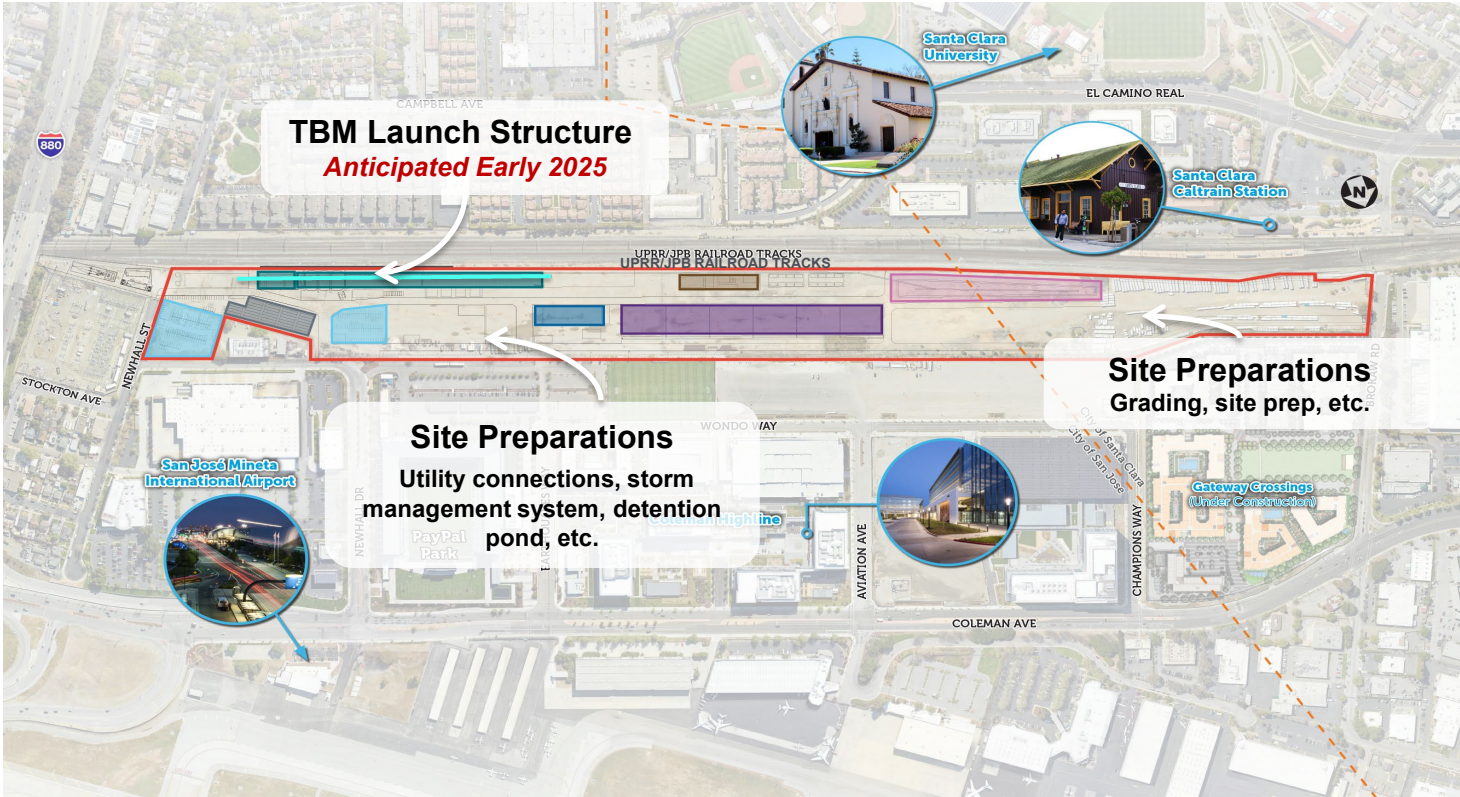
Brent Pearse, VTA

# VTA's BART Silicon Valley Phase II Extension





# Where is the West Portal and TBM Launch Structure



# Remaining West Portal Site Preparations



- Underground exploration for existing utilities
- Installation of storm drain line
- Installation of temporary electrical utilities for tunnel and support facilities

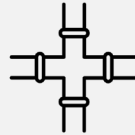




This work helps finish preparing the overall West Portal site and yard area.



Lateral connections of temporary underground utilities



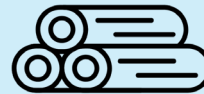
Utility tie-ins for storm drain, sanitary sewer, gas and water



Lift stations for storm drain, sanitary sewer, gas and water



Completion of storm water management system (detention pond, lift stations and pipe runs)



Completion of the underground electrical duct bank laterals

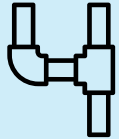


Installation of four PG&E power drops

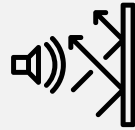
# Upcoming Construction and TBM Launch Structure



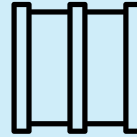
This work helps procure long lead items and prepare for the construction of the launch structure.



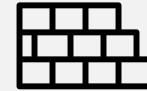
Dewatering  
Wells



Noise Curtain



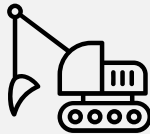
Slurry and Sheet  
Pile Walls



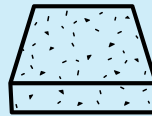
Confinement Wall  
& Ground  
Replacement



Instrumentation



Excavation and  
Bracing



Concrete Base  
Slabs/Ramp



Water  
Treatment



Site  
Maintenance



# West Portal Site Flyover





# Construction Screening Approach

# Purpose of Screening



**Purpose:** Provide visual screening of construction areas.

- VTA plans to screen almost the entire project site
- Screening used in conjunction with project signage.





# VTA BSVII West Portal Fencing





# Project Signage



## Project signage used in conjunction with fence line screening

### Signage Types:

- Wayfinding, project identification, project corridor, Thriving Business Program (TBP), contractor required signage, etc.



*Thriving Business Program Sign*



*Project Information Sign*



**Fence line locations dependent on active construction areas and types of activities.**

- **Preparatory/Early Works** (*soils testing, utility relocation, building demolition, etc.*): Fence lines will change at each station site to minimize impacts
  - Station specific screening
- **Major Construction:** More consistent fence lines with full work area.
  - Project & community branded screening

# Lookahead: Major Construction



- Opportunity for partnership and customization once Major Construction begins and fence lines stabilize.
  
- 2026 San Jose Sporting Events
  - **Goal:** To have fence line screening in pristine condition for these events.
  - Major Construction fence lines to coincide with community partnership screening.

- 2/8 Superbowl
- 3/27 & 3/28 March Madness
- 6/13-7/1 FIFA World Cup



# Property Early Construction Activities



- Once VTA acquires a project property, it must undergo a carefully managed transformation
- Preparing a site for construction involves a series of strategically coordinated activities
  - Securing Permits
  - Conducting Environmental Assessments
  - Demolition
  - Utility Relocation

# Property Early Construction Activities



## Pre-Demolition Activities

*Prepares the site for safe and compliant demolition and construction.*

1. Site Access and Security Setup
2. Site Assessment and Surveys
3. Utility Shut-Offs and Disconnects
4. Permitting and Approvals
5. Environmental and Site Remediation
6. Demolition and Clearing





## Post-Demolition Activities

*Preparing the site for infrastructure development and public safety*

6. Utility Relocation and Coordination
7. Historic Building Protection (9-18 Months)
8. Grading and Earthwork
9. Construction Staging Area Setup
10. Stormwater and Erosion Control



# Property Early Construction Activities



## Preparing for Construction

11. Pre-Construction Surveys and Monitoring

12. Site Preparation for Foundations and Structures

13. Public Notifications and Communication Efforts

 **BART SILICON VALLEY  
PHASE II EXTENSION PROJECT**

**Construction Notice**

**Diridon Station Area – VTA Parking Lot Impacts**  
*W. Santa Clara St. between Montgomery Street and Cahill St.*

**Monday, September 16 – Friday, November 28, 2024**  
General Working Hours: 9 a.m. – 3 p.m.

**What to Expect**

- Parking spaces within the VTA Parking Lot will be impacted and unavailable due to equipment storage.



**Project Information**

VTA's BART Silicon Valley Phase II Extension (Phase II Project) is a six-mile, four-station extension of BART from Berryessa / North San José Station (opened 2020) through downtown San José to the City of Santa Clara. The Phase II Project is planned to include an approx. five-mile subway; three stations with underground platforms (28th Street/ Little Portugal, Downtown San José, and Diridon), one ground-level station (Santa Clara), a train maintenance and storage facility, and additional facilities.

**Roadway Safety Tips**

- Maintain a safe following distance
- Plan your trip ahead
- Slow down and follow posted speed limits
- Be aware of your surroundings
- Pay attention to safety signs

 Valley Transportation Authority  
Solutions that move you

 (408) 321-2345  
(408) 321-2330 TTY

 VTABART.org  viabart@vtabsv.com

 @vtabsv  @vtabsv2  @vtabsv2

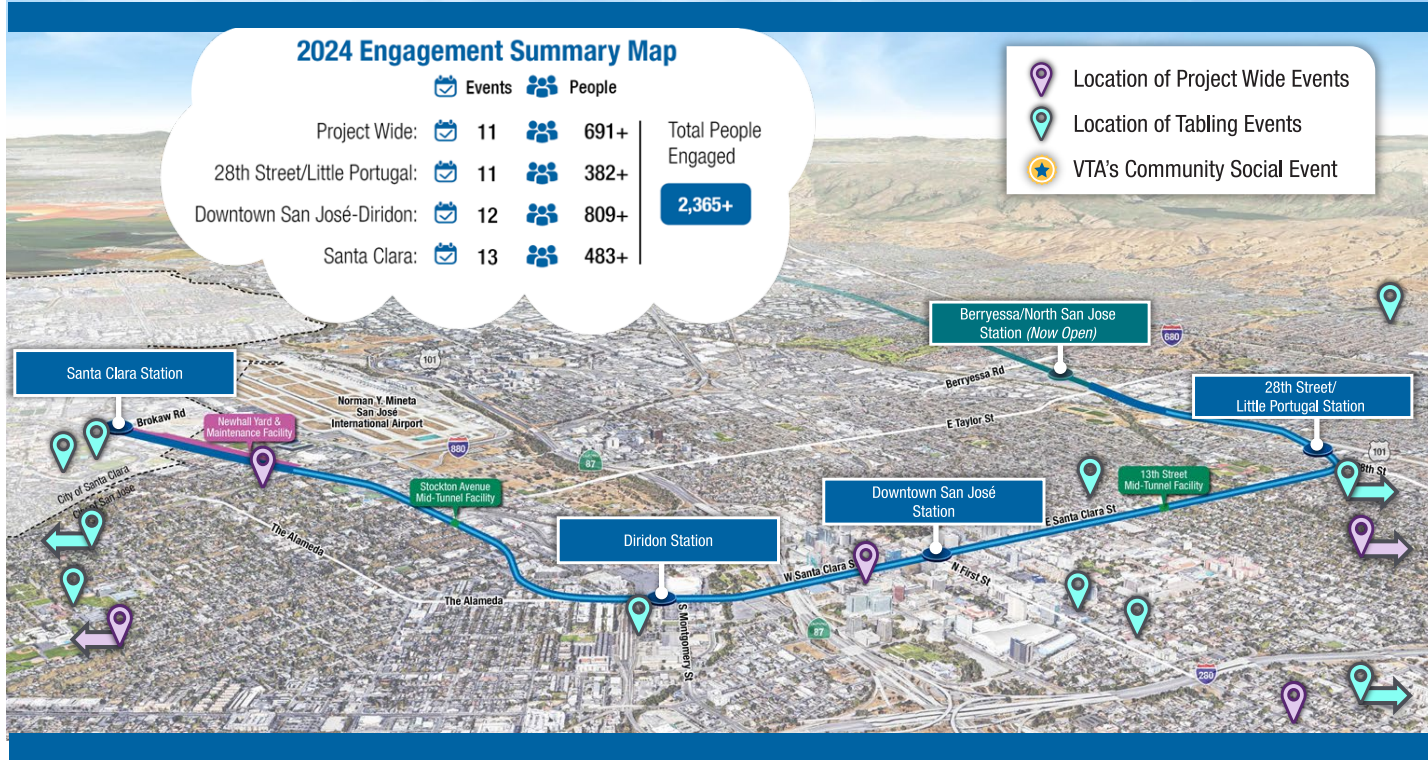




# BSVII Year in Review

Kristen Mei, VTA

# 2024 Engagement Summary





# Project Wide Engagement



- 1 - Community Meeting
- 4 - Tabling Pop-Up
- 1 - Ask VTA Event
- 4 - Project Alignment Walking Tours
- 1 - Combined CWG Meeting





# 28th Street/Little Portugal Engagement



1 - Community Meeting

1 - Tabling Pop-Up

1 - 28th Street/Little Portugal Station Walking Tour

5 - 28th Street/Little Portugal CWG Meetings



# Downtown-Diridon Engagement



4 - Tabling Pop-Ups

5 - Downtown-Diridon CWG Meetings



# Santa Clara Engagement



3 - Tabling Pop-Ups

4 - Santa Clara CWG Meetings



# 2024 Digital Engagement



## BSVII Project Website Launched

- August 2024
- [vtabart.org](https://vtabart.org)

## Digital Content Released

- Issued 12 construction notices
- Shared 96 social media posts
- Media covered the project 147 times
- VTA wrote 11 project-related blogs
- Distributed CWG Social Media Toolkit

## Social Media Engagement

- Total # of People Reached\* = 191,280
- Total # of User Interactions\*\* = 8,805
- Total Subscribed Audience = 5,345



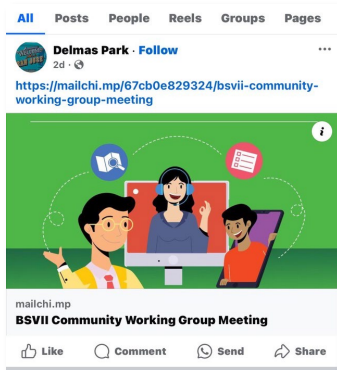


# CWG Stakeholder Toolkit



## Launch of November CWG Communications Toolkit

- Help Spread the Word!
- Share with your Communities!



VTA'S BART SILICON VALLEY PHASE II EXTENSION PROJECT  
CWG COMMUNICATIONS TOOLKIT  
SANTA CLARA MEETING PROMOTION

**Help Us Spread the Word!**

Santa Clara Valley Transportation Authority (VTA) has developed a communications toolkit for the BART Silicon Valley Extension Project to provide our Community Working Group (CWG) members, stakeholders, and project partners with content to share via your organization's social media outlets, newsletters, and email notices to the greater community.

This toolkit focuses on the promotion of our upcoming Santa Clara CWG meeting in November 2024 to the communities that your organization represents.

**How to Use the Toolkit**

Please integrate the messaging and social media graphic (below) into your organization's social media, email, and newsletter to promote the upcoming meeting to the community! You can copy and paste the following messaging and download the attached graphic to share.

Tag our social media accounts in your posts so that we can cross-promote your efforts!

[f @vtabsv](#) [@vtabsv2](#) [@vtabsv2](#)

**Recommended Messaging— Copy and paste the following!**

Join VTA at its November 2024 BART Silicon Valley Phase II Extension Project (BSVII) Community Working Group (CWG) Meeting for Santa Clara Station!

At this hybrid meeting, you can join either in-person or virtually to learn about the latest BSVII Project updates and station specific updates for the Santa Clara Station. We will provide an update on approved cost saving concepts, construction, BSVII's yearly review, and more!

**Meeting Details:**

- Thursday, November 14, 2024, from 4 pm – 5:30 pm
- In-person Meeting will be held at the VTA BSVII Office – Chesbro Conference Room (2830 De La Cruz Blvd., Santa Clara, CA 95050)
- Online Meeting can be accessed at <https://kimley-horn.zoom.us/j/99931628703>

For more information, view the Project's calendar at: <https://vtabart.org/community-activity/>  
#bart siliconvalley #vtabsv2

VTA's BART Silicon Valley Phase II Extension Project  
November 2024

TOOLKIT – SANTA CLARA STATION

graphic for a link to download!

### Join VTA BART Silicon Valley Phase II's Community Working Group Meetings

BART SILICON VALLEY PHASE II EXTENSION PROJECT  
Solutions That Move You

VTA's BART Phase II Hotline  
(408) 311-2345  
(408) 321-2320 TTY

[vtabart.org](#)  
[vtabart@vtabsv.com](mailto:vtabart@vtabsv.com)

[@vtabsv](#)  
[@vtabsv2](#)  
[@vtabsv2](#)





# CWG Member Report Out

# Report Back – Santa Clara



- Alden Smith, Holland Partner Group
- **Ana Vargas-Smith**, *Reclaiming Our Downtown*
- Bella Burleigh, *SCU Service & Social Justice (SCCAP)*
- Jack Morash, *South Bay Historic Railroad Society*
- John Urban, *Newhall Neighborhood Association*
- Jonathon Evans, *Old Quad Residents Association*
- Ron Miller, *Bellarmino College Preparatory*
- Ryan Morfin, *San José Earthquakes*
- Sean Collins, *Santa Clara University*
- Todd Trekell, *Hunter Partners*
- *Vacant*, *Silicon Valley Central Chamber of Commerce*

How have you been sharing information and updates on BSVII with your community?

What have you heard from your communities?

# Next Steps

- Next CWG meeting:  
**February 13, 2025**
  - Phase II Update
  - Construction Update
  - Thriving Business Program Update
  - 2025 CWG Workplan

# December Community Meeting



**You're invited to join us!**

**Virtually**

Monday,  
**December 2<sup>nd</sup>**  
6 pm

Zoom  
(link available below)

**Virtual RSVP**



<https://bit.ly/BSVII-virtual>

**In-person**

Wednesday,  
**December 4<sup>th</sup>**  
6 pm

San Jose Chamber  
of Commerce

**In-person RSVP**



<https://bit.ly/BSVII-in-person>



**Help us spread the word to your organizations and community!**