



# Construction Notice



## Soils Testing

114 N 28<sup>th</sup> St, San Jose, CA

**Monday, May 4 through Monday, June 8, 2026**

**Working Hours: 8:00 a.m. to 6:00 p.m., Monday through Friday**

### Construction Activities

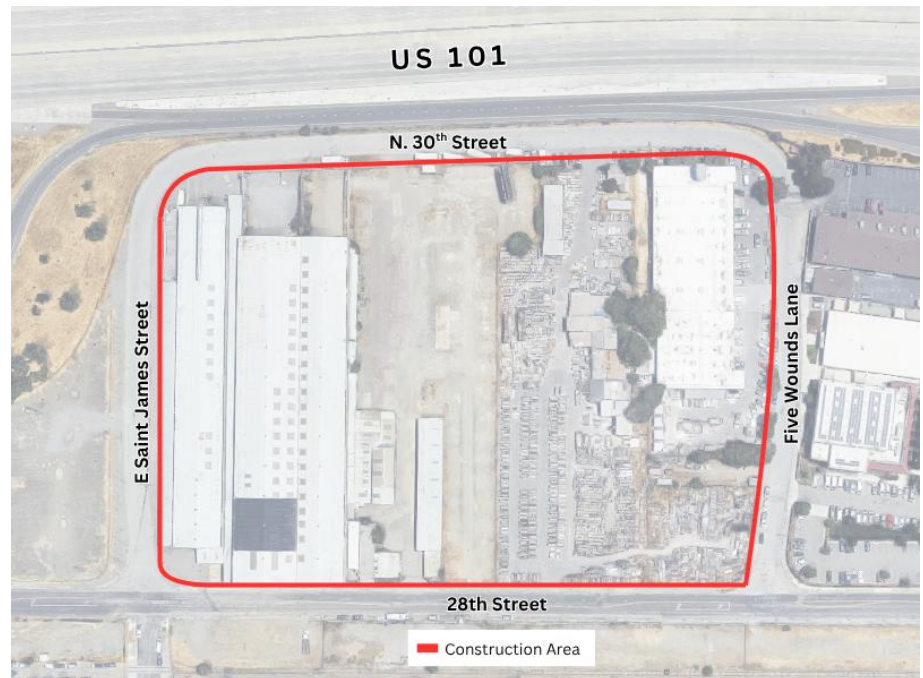
- Soils testing and drilling activity.
- Work equipment includes truck-mounted drill rigs, pickup trucks and liftgate trucks.

### Where

- VTA property within construction area bounded by E. Saint James, N. 30<sup>th</sup> Street, Five Wounds Lane, and 28th Street.

### What to Expect

- Occasional drilling noise during working hours.



### Project Information

VTA's BART Silicon Valley Phase II Extension (Phase II Project) is a six-mile, four-station extension of BART from Berryessa / North San José Station (opened 2020) through downtown San José to the City of Santa Clara. The Phase II Project is planned to include an approx. five-mile subway, three stations with underground platforms (28th Street/ Little Portugal, Downtown San José, and Diridon), one ground-level station (Santa Clara), a train maintenance and storage facility, and additional facilities.

### Roadway Safety Tips

- ✓ Maintain a safe following distance
- ✓ Plan your trip ahead
- ✓ Slow down and follow posted speed limits
- ✓ Be aware of your surroundings
- ✓ Pay attention to safety signs

