



July 2026 Construction Update

Activities Continue to Progress at West Portal, Newhall Yard & Maintenance Facility, Downtown San José, Diridon and 28th Street/Little Portugal Station Sites

West Portal Launch Structure

Upcoming construction activities include continued excavation, installation of structural support systems, instrumentation work and removal of temporary support elements. These activities continue to advance construction of the West Portal Launch Structure.

Anticipated Work in July– What to Expect

In July, work activities at West Portal will occur **Monday through Saturday for 24 hours a day.**

Day Time Work Includes:

- **Installation of Monitoring Equipment:** Crews will complete installation of instrumentation within the Caterpillar Shaft cap beam in early July. These instruments help track ground movement and structural performance. Expect minimal drilling activity and intermittent steel handling noise.
- **Contractor Demobilization Activities:** Equipment and materials associated with earlier phases of work will be removed from the site by early July. Expect crane activity and intermittent steel handling noise.

Day and Nighttime Work Includes:

- **Excavation within the Launch Structure:** Excavation activities will expand further into the launch structure near the Cat Shaft area. Expect crane activity, haul trucks removing material, and continuous construction noise.
- **Installation of Steel Bracing at Underground Support Walls:** As excavation progresses, steel bracing will continue to be installed to support and stabilize the underground walls. Expect crane activity, as well as intermittent steel handling noise.
- **U-Wall Lower-Level Bracing Removal:** Crews will remove temporary lower-level bracing within the underground support walls. This work marks a transition as excavation progresses and permanent support systems are installed. Expect crane activity and intermittent steel handling noise.

Weekend Work Includes: Routine on-site maintenance with minimal anticipated impacts to the surrounding area.

Downtown San José Station Area

- **Third-Party Utilities Activities:** AT&T continues to excavate, shore and install a manhole at West Santa Clara and 2nd Streets through July 7, 2026. AT&T has also excavated, shored, and installed manholes at West Santa Clara Street at Market and 3rd Streets.





July 2026 Construction Update

Diridon Station Site

- **Third-Party Utilities Activities:** AT&T has nearly completed a manhole installation near West Santa Clara Street and Stockton Avenue. Trenching and sidewalk placement will follow. Utility relocation by PG&E is targeting a remobilization/completion date by the end of August 2026, pending reimbursement agreements with Owner and Tenant on acceptable dates. Work will be overnight 9:00 pm - 5:00 am.
- **Soils Testing:** Beginning July 20-October 18, the parking lot south of Santa Clara St. between Barack Obama Blvd. and S Montgomery St. will be temporarily closed for soils testing and trenching activity. Field equipment will include a sawcut machine, excavator/backhoe, and a geotechnical coring machine. Minor dust, noise, and vibration may occur during the working hours of 7am-7pm.

28th Street/Little Portugal Station Site

- **Site Remediation:** Site remediation of the properties formerly occupied by Silicon Valley Granite, Della Maggiore, and Security Contract Services began on June 8, to prepare the properties for upcoming demolition. This work will take place over 8 weeks and is scheduled to be completed in late July.
- **PG&E Utility Gas Shut Down:** Prior to demolition, PG&E utility gas shut down is required and will take place on June 25th. This preparatory work will prepare the site to begin demolition of the 3 properties.
- **Site Demolition:** Property demolition will be beginning as early as June 29th. Demolition work of the 3 sites on the station block will continue throughout July and August in phases.





July 2026 Construction Update

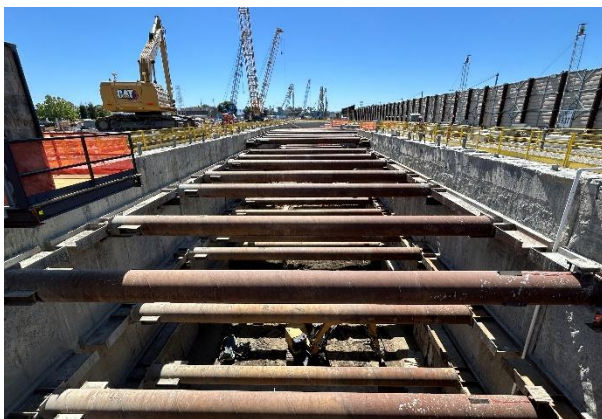
May 2026 – June 2026 West Portal Construction Progress



Newly installed elevator provides safe access to below-groundwork zones



Underground support wall construction is complete



Tunnel Boring Machine launch structure excavation is 56% complete



Top portion of the Caterpillar Shaft is complete

