



Construction Notice



Building Demolition

114 N 28th St, San Jose, CA

As early as Monday, June 29, 2026 (Duration of 10 weeks)

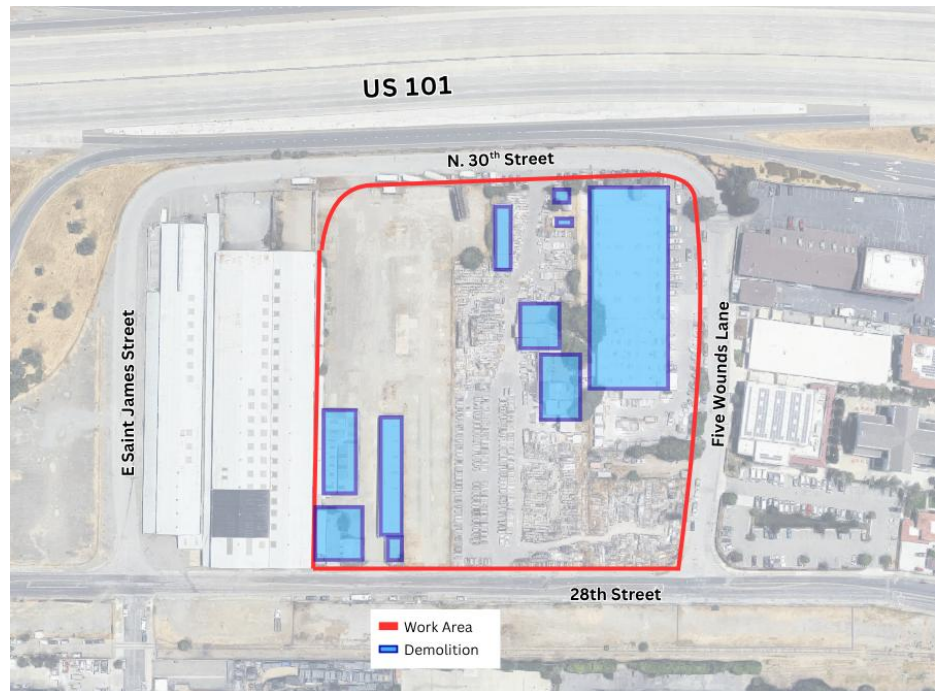
Working Hours: 7:00 a.m. to 4:00 p.m., Monday through Friday

Construction Activities

- Demolition of buildings formerly occupied by Silicon Valley Granite, Della Maggiore and Security Contractor Services.
- Work will occur within the property limits to remove the buildings.

What to Expect

- Minor dust, noise and vibration during working hours.
- Work equipment includes excavator, backhoe/skid loader, dump trucks and water truck or water trailer.



Project Information

VTA's BART Silicon Valley Phase II Extension (Phase II Project) is a six-mile, four-station extension of BART from Berryessa / North San José Station (opened 2020) through downtown San José to the City of Santa Clara. The Phase II Project is planned to include an approx. five-mile subway, three stations with underground platforms (28th Street/ Little Portugal, Downtown San José, and Diridon), one ground-level station (Santa Clara), a train maintenance and storage facility, and additional facilities.

Roadway Safety Tips

- ✓ Maintain a safe following distance
- ✓ Plan your trip ahead
- ✓ Slow down and follow posted speed limits
- ✓ Be aware of your surroundings
- ✓ Pay attention to safety signs

